

MANDATORY DISCLOSURE

1. Name of the Institution

Name of the Institution	SETHU INSTITUTE OF TECHNOLOGY
Address of the Institution	Pulloor, Kariapatti Taluk
City & Pin Code	Virudhunagar Dt. Pincode - 626115
State / UT	Tamil nadu
Phone number with STD code	04566-229700
FAX number with STD code	04566-308000
Email	sit@sethu.ac.in
Website	www.sethu.ac.in
Nearest Railway Station(dist in Km)	25 KM
Nearest Airport (dist in Km)	12 KM
Type of Institution	Private-Self Financed
Category (1) of the Institution	Non Minority
Category (2) of the Institution	Co-Ed

2. Name and address of the Trust/ Society/ Company and the Trustees

Name of the organization running the Institution	SETHU EDUCATIONAL TRUST
Type of the organization	Trust
Address of the organization	No. 477, 10th East Cross Street Anna nagar, Madurai. Pincode – 625020
Registered with	Under Indian Trust Act of 1882
Registration date	28.12.1994
Phone number with STD code	0452-2532215
FAX number with STD code	0452-2538126

3. Name and Address of the Vice Chancellor/ Principal/ Director

Name of Principal / Director	Dr.A.SENTHIL KUMAR
Exact Designation	PRINCIPAL
Phone number with STD code	04566 – 229705
FAX number with STD code	04566 – 308000
Email	principal@sethu.ac.in
Highest Degree	Ph.D.

4. Name of the affiliating University

Name of the affiliating University	Anna University, Chennai
Address	Guindy, Chennai.
Website	www.annauniv.edu
Latest affiliation period	2021 - 2022

5. Governance

Governing Board Members *

Sl. No.	Name	Position
1	Mr. S. Mohamed Jaleel	Chairman
2	Mr. S M. Seeni Mohaideen	Trust Member
3	Mr. S.M. Seeni Mohamed Aliar Maraikkayar	Trust Member
4	Ms. S.M. Nilofer Fathima	Trust Member
5	Dr. S.M. Nazia Fathima	Trust Member
6	Dr. H. Devaraj	Member (Educationalist)
7	Mr. K. Ganesan	Member (Educationalist)
8	Dr. K. Subramanian	Member (UGC Nominee)
9	Dr. S. Muthu	Member (Educationalist)
10	Mr. B.T. Bangera	Member (Industrialist)
11	Dr. M. Kannan	Member (University Nominee)
12	Ms. E. Esai Arasi	Member (DOTE Nominee)
13	Ms. S. Meenakshi	Member (Alumni)
14	Dr. A. Merline	Member (Faculty)
15	Dr. G.D. Sivakumar	Member (Faculty)
16	Dr. A. Senthil Kumar	Member Secretary

Members of Academic Advisory Body

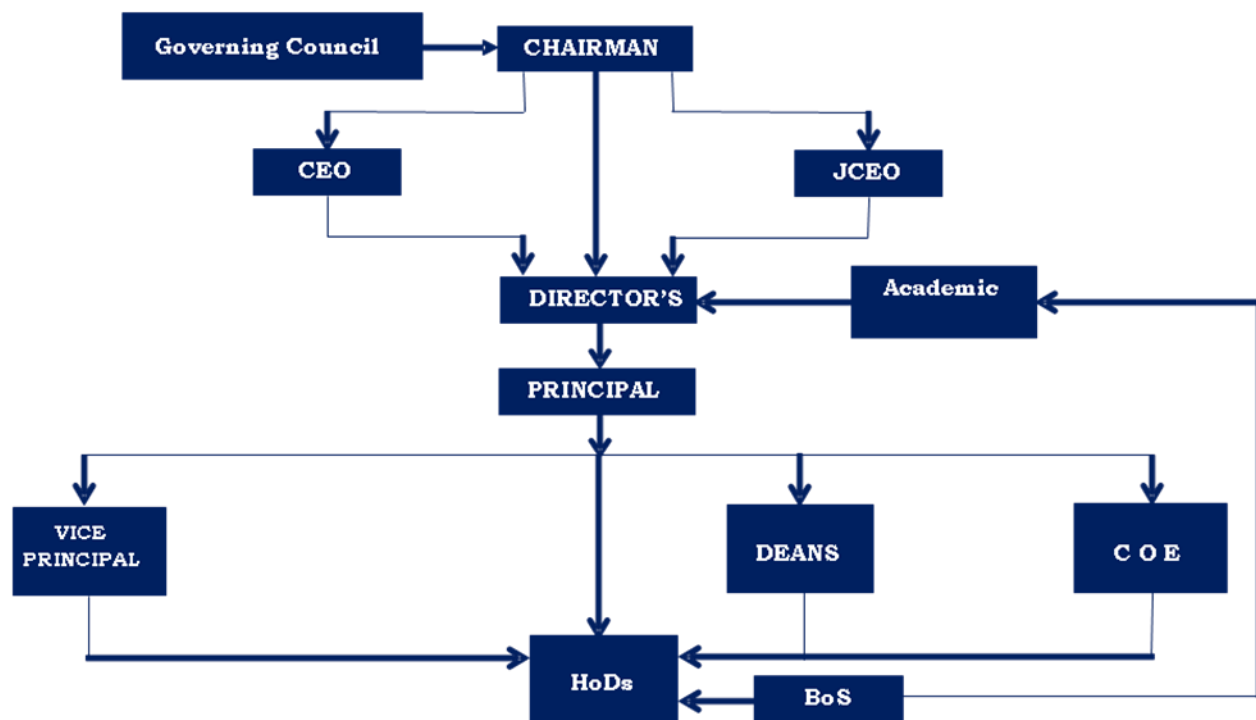
SI No.	Name of the Member	Position
1	Dr. A. Senthil Kumar Principal	Chairperson
2	Dr. P. Aruna Professor, Department of Medical Physics, Anna University, Chennai — 600 025	Member (University Nominee)
3	Dr. P. Subha Karuvelam Professor, Department of Electrical and Electronics Engg, Government College of Engineering, Tirunelveli - 627007	Member (University Nominee)
4	Dr. J. Nafeesa Begum Professor & Vice Principal, Government College of Engg, NH 46, Chennai Bangalore Highway, Bargur, Krishnagiri — 635 104	Member (University Nominee)
5	Dr. S. Muthu Formerly Special Officer, DOTE.	Member (External Expert)
6	Mr. B.T. Bangera Managing Director, Hi-Tech Arai Pvt.Ltd., Madurai	Member (External Expert)
7	Dr. M.S. Palanisamy Former VC Tamil nadu Open University	Member (External Expert)
8	Dr. M. Jayachandran Formerly Chief Scientist & Head Electrochemical Materials Science Division, CECRI, Karaikudi.	Member (External Expert)
9	Dr. S.M. Nazia Fathima Director R & D	Member
10	Dr. G.D. Sivakumar Vice Principal	Member
11	Dr. A. Merline Dean(Planning & Development)	Member
12	Dr. K. Hemalatha Dean (Academics)	Member Secretary
13	Dr. C. Muthusamy Board Chairperson — MECH	Member
14	Dr. M. Parvathy Board Chairperson - CSE	Member
15	Dr. A. Srinivasan Board Chairperson - EEE	Member
16	Dr. S. Sivaranjani Board Chairperson - IT	Member
17	Dr. B. Jeyaprabha Board Chairperson - Civil	Member
18	Dr. V. Dharamaraj Board Chairperson — Agriculture	Member

SI No.	Name of the Member	Position
19	Dr. R. Arangasamy Board Chairperson — Biomedical	Member
20	Ms. R .Nageshwari Board Chairperson - Biotechnology	Member
21	Dr. D. Lakshmana Raj Board Chairperson - Maths	Member
22	Dr. V. Revathi Board Chairperson - Physics	Member
23	Dr. L. Jayalakshmi Board Chairperson - Chemistry	Member
24	Dr. S. Ramesh Board Chairperson - English	Member
25	Dr. R. Aghila Prof.& Head, CSBS	Member
26	Dr. C. Kailasanathan Prof. MECH	Member
27	Dr. M. Malathi Prof. & PG Head CSE	Member
28	Dr. R. Tamil Selvi Prof. & PG Head ECE	Member

Frequency of the Board Meeting and Academic Advisory Body

Academic Advisory Body and Board of Studies meeting are conducted as per the guidelines of UGC and AICTE.

Organizational chart and processes



Nature and Extent of involvement of Faculty and students in academic affairs/improvements

Responsibility of other Teaching Faculty:

- Other teaching faculty includes Professors, Associate Professors and Assistant Professors
- Facilitating design of Curriculum and syllabi, teaching, learning and evaluation process.
- Maintaining records to comply with the statutory requirements like students' attendance, internal assessment etc.
- Taking assignments like class advisor, proctor and in other co-curricular and extra-curricular activities.
- Maintaining discipline and decorum in the campus on their part and on the part of the students.
- Engaging in Research and Development work, participating in short term refresher courses, seminars, conferences and publishing papers in Journals.

As per AICTE Pay Commission [1997] Recommendations, the Job Responsibilities of Faculty consists of 4 components viz.,

(i) Academic (ii) Research & Consultancy (iii) Administration (iv) Extension Services

Authority of other Teaching faculty:

- To conduct the class and guide and counsel the students under his/her custody.
- To take decisions and execute the same within the ambit of his/her responsibilities.
- To co-ordinate the work of supporting staff.
- To assume responsibility in the absence of the HoD.

Academic Performance of Students and Mentoring

The academic performance of students is monitored continuously throughout the course of their study. From first semester onwards, students are under academic mentoring by proctors and class advisors. The proctors and the class advisors meet the students during the lunch break. They patiently counsel and get the feedback on their progress in academics.

The progress of the students in academics is closely observed by them and whenever counseling is required they extend moral support to rectify the problems then and there. If any problem with a student could not be solved, they bring this to the knowledge of the Head of the department for remedial action.

The college earnestly provides personal enhancement and development schemes for students. The focus for personal enhancement and development invariably begins from the first semester and it is carried on until the final semester.

Soft Skill Development

The college has a dedicated team of faculty members to impart exclusive training to the students in Soft skills and personality development. The Training and Placement Cell brings in soft skill trainers and eminent resource persons from various industries for personal enhancement and development. The soft skill training is provided from the first year onwards to enhance the personal development of students.

Communication skill development

The college takes the initiative for enhancement of proficiency in English Language skills from first year onwards. Gradual development of such skills may happen only when the training begins from the first semester. Students of the college are also given a platform to enhance aptitude and verbal skills continuously.

Career guidance

The college offers career guidance for further studies, employment opportunities in government as well as private sectors and also in the field of entrepreneurship. Offering such valuable guidance to the students at the right time makes a great impact in the choice of their career as well as in the progress towards the chosen career. Exposure is given to students on avenues open to students in foreign universities, scholarships and immigration through the Career Guidance Cell which is a part of Placement cell. Students are motivated to participate in competitive exams like, TNPSC, UPSC, Defense services, MONET, GRE, CAT, MAT, GATE, IELTS, TOEFL etc. through Career Guidance Cell.

Value added courses

For enhancing the prospects of higher education and employment for the students in the current global scenario value added courses are essential. Various value added courses like EMC², ANSYS, Labview etc., are given to the students by the departments.

Personal Enhancement and Development through Department Association

The Department Association regularly organizes technical symposiums, National and International seminars, national and international conferences, workshops, guest lectures and an assortment of competitions. The students are encouraged to organize various events through various committees of the Associations and it improves organizing skills and personality development.

The college regularly invites the alumni as resource persons and conducts Guest lecturers to kindle the student's knowledge by their senior friends to fulfill the expectation of the industries.

The college offers various student centered activities like sports and games, cultural and extracurricular activities. A wide range of opportunities are available for the students through Inter-departmental and inter-collegiate competitions to bring out their potential talents.

Sports and Games

The college is facilitated with a 25 acre sports village with 400 meter track along with the drainage system. The College also provides facilities to maintain physical fitness of students by establishing gymnasiums in the sports village and in their respective hostels. The following table provides the details of various sports and games available for students.

S.No	Name of the Sports and Games
1	Hockey
2	Football
3	Volleyball
4	Basket Ball
5	Badminton
6	Ball Badminton
7	Kho-Kho
8	Cricket
9	Chess
10	Athletics
11	Throw Ball
12	Yoga
13	Hurdles

S.No	Name of the Sports and games
14	Tennis
15	Fencing
16	Boxing
17	Weight lifting

Cultural Events

The College has organized various cultural events to bring out the talents of students. A pivotal role is played by Fine Arts Association to organize various activities like fine arts and cultural events. The women Empowerment Cell activities pave the way for enormous talents of students to be exhibited. The lists of cultural events are given in the following table.

S.No	Cultural Events
1	Dance
2	War of dance
3	Dance floor
4	Western & Carnatic Dance
5	Nadanasrishti
6	Solo dance
7	Insync Group Dance
8	Free style dance
9	Adapt tune
10	Video choreography
11	Tamil & English essay writing
12	Speech contest
13	Just a minute
14	Stage breakers
15	Tamil elocution
16	Tamil Turncoat
17	Turn Coat English

Cultural events are organized in an air-conditioned auditorium named Pavendhar Bharathidhasan Arangam which has the capacity to accommodate 600 students with the latest audio-visual systems. Besides, major cultural events are organized in the Open Air Auditorium which has a seating capacity of 5000.

Fine Arts Association conducts Rangoli, Mehendi, Cartooning, Painting, Art from waste, Dance, Orchestra, Elocution, Dumb Charade, Cartoon drawing, Recitation, Verse writing and skit competitions to bring out the talents of students. Fine Arts Association also invites guests from the world of music, art, theatre etc.

Extra Curricular

National Service Scheme Unit

NSS Unit I & II provides opportunities to students to work on different projects which include social work, literacy, relief work and basic education.

A green environment atmosphere is created by NSS volunteers by planting tree saplings every year in and around the college campus. Hundred students been enrolled as volunteers in each unit. The NSS Units also conduct AIDS Awareness programs, Personality Development programs and Sapling festivals etc.

The NSS units have also organized special camps in nearby villages. The significance of the special camp is to create awareness about importance of technical education, pollution free environment, fire accident and its safety measures, the effects of tobacco etc.

Red Ribbon Club

The RRC aims at harnessing the potential of the youth by equipping with appropriate information on HIV/AIDS prevention, care, support and treatment. It also aims to build the capacity as peer educators to spread the message among the youth on HIV/AIDS, positive health behavior. Blood donation camps are organized by the student volunteers in the college to succor the needy

Youth Red Cross

The YRC student volunteers have made a significant contribution in meeting the needs of the most vulnerable people in the society through YRC programmes. The Youth Red Cross unit of the college organizes activities that cultivate a humanitarian spirit and conducts training on safety, primary health care and healthy living.

Women Empowerment cell

Women Empowerment cell is to enhance understanding of issues related to girl students. With a view to taking up women's issues and problems, the cell aims at creating awareness of their rights and duties. It also provides a platform for women to share their experiences and views regarding their status in the society and to suggest ways to improve and empower themselves.

Mechanism/ Norms and Procedure for Democratic/ Good Governance

Democratic/ Good Governance System is the practice of empowering employees to participate in organizational decision making. DGS is to promote genuine involvement in the enunciation of vision, policies and goals of the institution in the decision making process and in the administration of the college.

DGS acts as a force to motivate employees to meet specific organizational goals. Motivated employees are the biggest assets of an organization and participative management is an effective strategy to retain the best talents of the college.

The following are the objectives of DGS:

- To introduce participative style of management in the college
- To introduce decentralization and delegation of powers
- To facilitate the decision making related to academic and administrative activities through open and honest discussions
- To maintain a proper flow of communication
- To meet the psychological needs of employees

The Context:

The vision of the College is to promote excellence in technical education and scientific research for the benefit of the society. The Management has shared the vision with the staff members making them aware of the implications of the vision and mission. To make the process more effective, the management decided to involve all the stake holders in the process of decision making at various levels.

As the College grew in size, number and courses, the challenges also grew in academic administration, finance management, resource planning and sharing and the like. Another challenge which the college had to handle was communication between and within the college, departments and admin-office. The College opted for PMS to redistribute authority, responsibility, financial resource and infrastructure among the different levels of organizational setup.

The Practice

The College follows Participatory Management Systems in all its decision making process. The participative management approach is practised at different levels in the college and all the stakeholders are involved in the process of decision-making based on collective wisdom. The stakeholders participate in the following fora and contribute to the decision making.

Democratic/ good Governance System for academic and administrative activities

- Governing Council
- HoDs Meeting
- Department Faculty Meeting (DFM)
- Class Committee Meeting (CCM)

Democratic/ good Governance System for curriculum designing

- Academic Council
- Board of Studies (BOS)
- Curriculum Planning and Evaluation Committee (CPEC)
- Department Advisory Board (DAB) Meeting
- Program Assessment Committee (PAC)

Democratic/ good Governance System for Quality Assurance

- Internal Quality Assurance Cell

Democratic/ good Governance System for general activities

- Student Welfare Committee Meeting
- College Faculty Meeting
- Alumni Meeting
- Parents Meeting
- Students Meeting

DEMOCRATIC/ GOOD GOVERNANCE SYSTEM

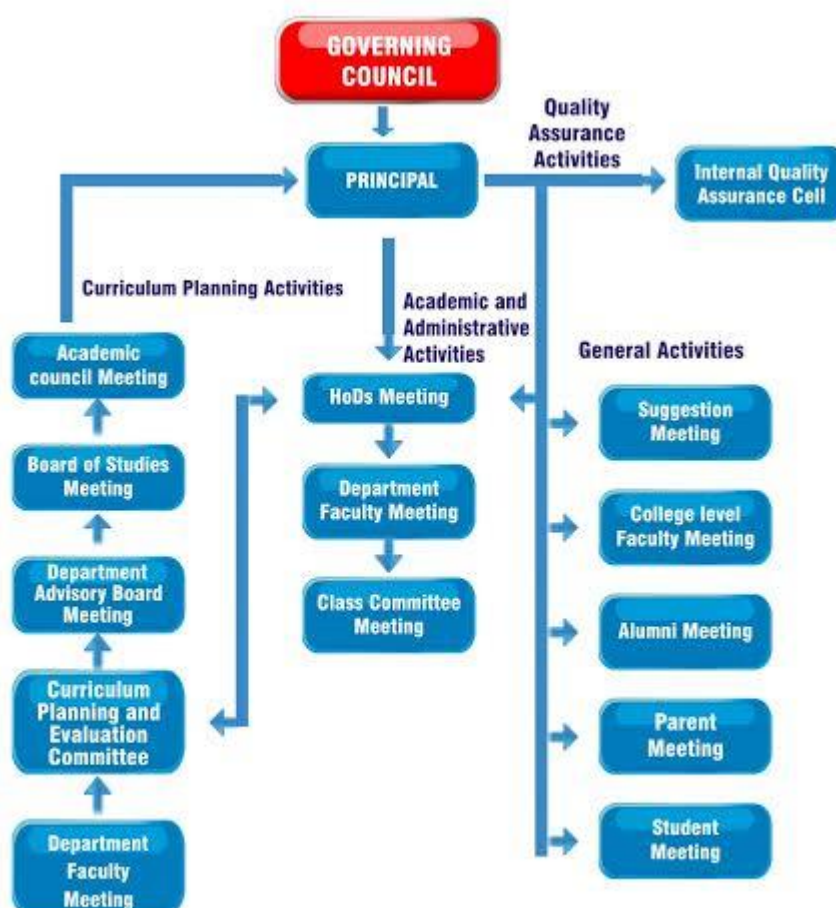


Fig. Democratic/ good Governance System

Democratic/ good Governance System for academic and administrative activities

Governing Council

The college has a Governing Council and all the policy decisions of the College are taken, based on the guidance of the Governing Council. In the Governing council, faculty members are also participating in decision making in addition to the eminent members from industry, academia and regulatory bodies.

HoDs Meeting

HoDs meeting is the executive council to take decisions in academic, research and industry institute interaction initiatives, etc. The members who participate in HoDs meeting are Principal, Vice Principal, Deans, HoDs, Professors and functional heads like COE, Librarian, Placement Officer, etc. All decisions are taken, after detailed discussions and implemented meticulously after arriving at a consensus decision.

Department Faculty Meeting (DFM)

Department Faculty Meeting is convened by the HoD and important decisions discussed in the HoDs meeting are conveyed for implementation. Faculty members provide their suggestion in all department level activities like academic excellence, R&D, Industry Institute Interaction, organizing seminars, academic progress of the students, performance of the students in the Periodical Tests and the corrective measures for the slow learners etc.

Class Committee Meeting (CCM)

The teaching learning process is continuously reviewed through various activities at different stages. At the initial level, the teaching learning process is reviewed in the class committee meetings consisting of course instructors of the class concerned, student representatives and a chairperson who is not teaching the class. The committee reviews the syllabus coverage and it tries to solve the problems experienced by students in the class room and in the laboratories.

Democratic/ good Governance System for curriculum designing

Academic Council Meeting

- Without prejudice to the generality of functions mentioned, the academic council will have powers to:
- Scrutinize and approve the proposals with or without modification of BOS with regard to courses of study, academic regulations, curriculum, syllabi and modifications thereof, instructional and evaluation arrangements, methods, procedures relevant thereto etc., provided that where the academic council differs on any proposal, it will have the right to return the matter for reconsideration to the BOS concerned or reject it, after giving reasons to do so.
- Make regulations regarding the admission of students to different programmes of study in the college
- Make regulations for sports, extra-curricular activities, and proper maintenance and functioning of the play grounds and hostels

Board of Studies (BOS) Meeting

The BOS of a department in the college shall:

- Prepare syllabi and various courses keeping in view the objectives of the college, interest of the stakeholders and national requirement for consideration and approval of the academic council
- Suggest methodologies for innovative teaching and evaluation techniques
- Suggest panel of names to the academic council for appointment of examiners
- Co-ordinate research, teaching, extension and other academic activities in the department / college
- The Principal of the college shall draw the schedule for meeting of the BOS for different departments. The meeting may be scheduled as and when necessary, but atleast once a year.

Department Advisory Board (DAB) Meeting

The Department Advisory Board consists of external experts like academicians, industrialists and all the faculty members. All important decisions related to the development of the Department are taken in this forum.

In Department Advisory Board (DAB) meeting, activities related to department development, research, curriculum planning & upgradation, industrial needs, etc., are discussed and decisions are made accordingly

Curriculum Planning and Evaluation Committee (CPEC) Meeting

The CPEC is constituted to discuss and decide all issues related to curriculum design and the different components of the curriculum process. This vibrant body has members drawn from all departments. These members are middle level faculty members of the Departments.

Program Assessment Committee (PAC)

Every program has a Program Assessment Committee (PAC), which is a core committee of the program. It is responsible for the design and development of the draft curriculum. The Chair Person of the committee is the Head of the Department, and the members are faculty members and student representatives of the program.

Democratic/ good Governance System for Quality Assurance

Internal Quality Assurance Cell

IQAC is formulated according to the guidelines of NAAC in the year 2014-15. The Internal Quality Assurance Cell (IQAC) where all decisions related to quality assurance are taken has representation of students and alumni in addition to the Heads of the Departments.

The functions of IQAC are:

- Developing quality benchmarks of the college through strategic planning to achieve the vision of the college.
- Monitoring the attainment of performance targets (PEOs and POs) of the programmes that are set by the respective Department Advisory Boards
- Dissemination of information on the various quality parameters of higher education
- Coordinating the quality assurance related activities such as:
- Quality Management System audit (External and Internal)
- Preparation of SAR and SSR for accreditation by NBA and NAAC
- Academic audit by the Academic Audit cell

Democratic/ good Governance System for general activities

Student Welfare Committee Meeting

The Student Welfare committee meeting is conducted by the Principal every month with student representatives from all the departments, where the suggestions received through the suggestion boxes are reviewed and corrective actions are taken.

The faculty members can post their suggestions in the separate suggestion box kept for them in the college office. They are also reviewed and corrective actions are taken.

College Faculty Meeting

The suggestions regarding academic, infrastructure development, research & development, etc., are discussed in the college faculty meetings.

They are discussed and accordingly decisions are taken by the Management and the Principal.

Alumni Meeting

Alumni are important, as they are a measure of the long-term success of the programme. Experience of the alumni provides inputs to the students for their career advancements. The suggestions given by the Alumni Members are collected through feedbacks and are incorporated in the curriculum development and infrastructural development.

Alumni feedback helps in curriculum designing and enriches the programme with the latest trends in technology. Innovative ideas are planned and follow up actions are taken on need basis.

Parents Meeting

Parents meetings are conducted every semester to get feedback from the parents. The suggestions of the Parents, regarding academic performance, placement, infrastructure facilities, etc., are discussed in the Parent Teachers meetings.

The issues are directly taken care of by the Principal and the Management. The grievances are well received and remedial actions are taken.

Students Meeting

The issues of the students are addressed in the class committee meetings. Two class committee meetings are conducted every semester as per the guidelines of Anna University.

- Apart from that, the students can access the Head of the Department, Principal and the Management at any time to solve their grievances.
- Proctor system is functioning effectively in the College to ensure/monitor the student's performance.
- Students inputs help to modify contents of the syllabi and introduction of new value added courses
- Feedback of the students helps to modify the teaching and learning methodologies. Feedbacks are collected from the students periodically about the Course and Course Instructors.

Student Feedback on Institutional Governance/ Faculty performance

Students and staff are welcome to give their suggestion in a suggestion form. Suggestion boxes are kept in the central location in the college and hostel. Suggestion slips are kept near the suggestion box in a form holder fixed to the wall.

A Student Welfare committee has been constituted with two faculty members, the Principal and Student Representatives.

The suggestion box is opened every month by the student representative in the presence of a committee member. All the suggestions are serially numbered and entered in a register.

The Student Welfare committee will meet every month to analyze and evaluate the suggestion. The committee will suggest necessary action on the suggestions and record the same in the suggestion slip and will forward them to the Principal. The Principal will initiate action. If any action is beyond the authority of the Principal, then it is sent to the Chairman for his advice.

Actions taken on the suggestions are informed to the staff/students through the notice board and the records are maintained by Principal

Evaluation of staff by students

Students are given an opportunity to evaluate the staff with regard to teaching traits, attitude of staff, syllabus and course coverage. This is obtained at the end of each semester and necessary corrective actions are initiated by the Principal.

All the students will be allowed to evaluate their faculty members in a prescribed form on a grade scale ranging from 1 to 5.

The feedback from the students will be analyzed by HoD and necessary corrective action in consultation with Principal will be initiated. This feedback is strictly used only for improving the quality of the system and not for any kind of victimization.

Grievance Redressal Mechanism for faculty, staff and students

Grievance Redressal System:

The suggestion box is placed at the Administrative Office, so that the staff can post any suggestion or grievance or complaint. Staff Suggestion Box is opened once in three months and the matters represented by the staff is analysed and the necessary remedial measure is taken wherever the representation is genuine. The suggestions are also received from the faculty meeting.

GRIEVANCE REDRESSAL CELL

Dr.G.Soundra Devi, Professor / EEE - Overall Convener

GRIEVANCE REDRESSAL CELL FOR BOYS STUDENTS & MALE STAFF

Dr.T.Guru Baskar, Professor / GE - Convener

Dr.M.Sivabharathy, Professor / Physics - Member

Mr.S.Paramasamy, Assoc. Prof. / Mech - Member

GRIEVANCE REDRESSAL CELL FOR GIRL STUDENTS & FEMALE STAFF

Dr.G.Soundra Devi, Professor / EEE - Convener

Dr.G.Vairasuganthi, Assoc. Prof./CSE - Member

Ms.P.Deepa, Asst.Prof./ECE - Member

Dr.D.Roja Ramani, Assoc. Prof. / IT - Member

Establishment of Anti-Ragging Committee

Anti-Ragging Committee

S.No.	Name of the Faculty	Designation
1	Dr.A.Senthil Kumar	Principal - Convener
2	Dr.G.D.Sivakumar	Vice Principal - Co-convener
3	Dr.R.Arangasamy	Dean (BME&BT) - Member
4	Dr.A.Srinivasan	HoD, EEE - Member
5	Dr.S.Gomathi	Professional Counsellor - Member
6	Dr.T.Guru Baskar	A.O - Member
7	Mr.L.A.Victor	Surabhi Trust – Member (NGO)
8	Ms.NB.Uma Maheswari	Lecturer/SVN College - Member (Parent)
9	Mr.M.Thangapandian	Head Constable, Aviyur Police Station – Member (Police)
10	Mr.Jeyakumar	Dinamalar – Newspaper – Member

S.No.	Name of the Faculty	Designation
11	Selvi.K. Anu Dharani	II Year Bio-Medical - Member (student)
12	Selvan.S.Karthikeyan	II Year Agri. - Member (student)
13	Selvan.C.Mahalingam	II Year Civil - Member (student)

Anti Ragging Squad

S.No.	Name of the Faculty	Designation
1	Dr. M.Sheik Dawood	Professor / ECE - Convenor
2	Mr.R.Umesh	Asst. Prof. (SG) / CSE - Member
3	Mr.B.Muthupandian	Asst. Prof.(SG) / ECE - Member
4	Dr.S.Vijayarajan	Assoc. Prof. / EEE - Member
5	Mr.S.Vignesh Bharathi	Asst. Prof. / Civil - Member
6	Mr.M.Arul Jayan	Asst. Prof.(SG) / Chemical - Member
7	Mr.R.Narayanasamy	Deputy Warden - Member

Establishment of Online Grievance Redressal Mechanism

Online grievance redressal mechanism is functioning inside the campus

Establishment of Grievance Redressal Committee in the Institution and Appointment of OMBUDSMAN by the University

Establishment of Internal Complaint Committee (ICC)

Internal Complaints Committee

S.No.	Name of the Faculty	Designation
1	Dr.B.Jeyaprabha Professor & Head / Civil	Presiding Officer
2	Dr.M.Parvathy Professor /CSE	Member (Faculty)
3	Ms.P.Meenalochini Asst.Prof. / EEE	Member (Faculty)
4	Dr.L.Jeyalakshmi, AP (SG) & HoD/Chemistry	Member (Faculty)
5	Dr. M.Poomani @ Punitha Assistant Professor (SG) / CSE	Member (Faculty)
6	Ms.P.Deepa Assistant Professor (SG) / ECE	Member (Faculty)
7	Dr.S.Meenakumari, Managing Trustee, Thainadu Rural Development	Member (NGO)

S.No.	Name of the Faculty	Designation
8	Ms.J.Anandha Valli, Eminent Lawyer, Madurai Bench of Madras High Court	Member
9	Ms.Sivasankari Lawyer, Madurai Bench of Madras High Court	Member

The committee will admit complaints from

- Female employees on harassment and discrimination in the workplace.
- Female students on harassment and discrimination in the classroom and in relation to academic activities by faculty and staff

The Committee will institute Enquiry Committee as it deems fit to examine particular complaints. The Committee will make recommendations on actions to be taken on specific complaints. The Committee will report to the Principal.

Internal Quality Assurance

S.No.	Name of the Member	Designation	Position
1	Dr. A. Senthil Kumar	Principal	Chairperson
2	Dr. G.D. Sivakumar	Vice Principal	Management Representative
3	Dr.K.Hemalatha	Dean (Academics)	Faculty Members
4	Dr.R.Murali Kannan	Controller of Examinations	
5	Dr.C.Muthusamy	HoD - MECH	
6	Dr.M.Parvathy	HoD - CSE	
7	Dr.M. Parisa Beham	HoD – ECE	
8	Dr.A.Srinivasan	HoD - EEE	
9	Dr.S.Sivaranjani	HoD – IT	
10	Dr.B.Jeyaprabha	HoD - Civil	
11	Mr.S.Nagul Dev	HoD (i/c) - Chemical	
12	Dr.R.Arangasamy	Dean (BME & BT)	
13	Dr.V.Dharmaraj	HoD - AGRI	
14	Dr. R. Aghila	HoD - CSBS	
15	Dr. M.Malathi	PG Head - CSE	
16	Dr. R.Tamilselvi	PG Head – Comm. Systems	
17	Dr.B.Meenakshi Sundaram	PG Head - PED	

S.No.	Name of the Member	Designation	Position
18	Dr. D. Lakshmana Raj	HoD – MATHS	Faculty Members
19	Dr.V.Revathy	HoD – PHYSICS	
20	Dr.L.Jayalakshmi	HoD – CHEMISTRY	
21	Dr.S.Ramesh	HoD (i/c) – ENGLISH	
22	Dr. G. Soundaradevi	First Year Coordinator	
23	Mr.T.Harish Babu	Asst.Prof. / EEE	
24	Selvi.S.Ulageshini	Final Year, ECE	Student Member
25	Selvi. Dhanya Lakshmi	Third Year, MECH	
26	Selvan.S.Aashish Raj	Third Year, CSE	
27	Selvan. G.N.Eeswar	Second Year, BME	
28	Mr.S.J.Pradeep	Proprietor, Techno Fusion, Engineering Consultant & Contractor, Aruppukottai	Alumni Member
29	Ms.T. Rajathi	Techno Functional Business Analyst, Solartis Technology Pvt. Ltd. Madurai.	Alumni Member
30	Mr.G.Rajamurthy	Director, SingaiCoirs Cluster Pvt. Ltd., Singampunari, Sivagangai District	Employer/Industrialist
31	Dr.T.Guru Baskar	Dean - Administration	Senior Administrative Officer
32	Dr.A.Merline	Dean – Planning & Development	Coordinator

NBA Accreditation Status

1	Name/ List of Programmes/ Courses Accredited	Accredited for Three Years: <ul style="list-style-type: none"> • B.E. Mechanical Engineering • B.E. Computer Science and Engineering • B.E. Electronics and Communication Engg. • B.E. Electrical and Electronics Engg. • B.Tech. Information Technology
2	Applied for Accreditation	NIL
	A. Applied but Visit not happened	- - -
	B. Visit happened but result awaited	- - -
3	List of Programmes/ courses Not Applied	<ul style="list-style-type: none"> • B.E. Civil Engineering • B.Tech. Chemical Engineering

NAAC Accreditation Status

1	Accredited	'A' Grade
2	Applied for Accreditation	NIL
	A. Applied but Visit not happened	- - -
	B. Visit happened but result awaited	- - -
3	Not Applied	- - -

Name : MECHANICAL ENGINEERING

Course : **B.E. MECHANICAL ENGINEERING**

Level : **U.G.**

	2020-21	2019-20	2018-19	2017-18
Number of Seats	240	240	240	240
Duration	4	4	4	4
Year wise Actual Admissions	100	219	195	240
Cut off marks/rank of admission during the last three years	Minimum 80.00 Maximum 148.50	Minimum 80.00 Maximum 177.25	Minimum 81.25 Maximum 174.25	Minimum 78.75 Maximum 183.00
Fee	MGT-85000 TNEA - 55000	MGT-85000 TNEA - 55000	MGT-85000 TNEA - 50000	MGT-70000 TNEA - 55000
Placement Facilities	Internal Training (Aptitude, Communication & soft skill, Technical (C,C++,Java)), External Training (Aptitude, Communication& soft skill, Technical(C,C++,Java)), Mock Interview, Online Assessment, Ebox, Company Specific Training, Guest Lecture, Departmentwise Technical Training, Code vita and Enginex Contest Training.	Internal Training (Aptitude, Communication & soft skill, Technical (C,C++,Java)), External Training (Aptitude, Communication& soft skill, Technical(C,C++,Java)), Mock Interview, Online Assessment, Ebox, Company Specific Training, Guest Lecture, Departmentwise Technical Training, Code vita and Enginex Contest Training.	Internal Training (Aptitude, Communication & soft skill, Technical (C,C++,Java)), External Training (Aptitude, Communication& soft skill, Technical(C,C++,Java)), Mock Interview, Online Assessment, Ebox, Company Specific Training, Guest Lecture, Departmentwise Technical Training, Code vita and Enginex Contest Training.	Internal Training (Aptitude, Communication & soft skill, Technical (C,C++,Java)), External Training (Aptitude, Communication& soft skill, Technical(C,C++,Java)), Mock Interview, Online Assessment, Ebox, Company Specific Training, Guest Lecture, Departmentwise Technical Training, Code vita and Enginex Contest Training.
Campus placement in last three years with minimum salary, maximum salary and average salary	Minimum- 120000 Maximum- 401988	Minimum- 120000 Maximum- 335000	Minimum-102000 Maximum-450000	Minimum -96000 Maximum-480000

Name : **COMPUTER SCIENCE AND ENGINEERING**

Course : **B.E. COMPUTER SCIENCE AND ENGINEERING**

Level : **U.G.**

	2020-21	2019-20	2018-19	2017-18
Number of Seats	180	180	180	180
Duration	4	4	4	4
Year wise Actual Admissions	178	181	180	162
Cut off marks/rank of admission during the last three years	Minimum 80.00 Maximum 169.00	Minimum 79.00 Maximum 189.50	Minimum 97.75 Maximum 180.00	Minimum 124.75 Maximum 181.00
Fee	MGT-85000 TNEA - 50000	MGT-85000 TNEA - 50000	MGT-85000 TNEA - 50000	MGT-70000 TNEA - 55000
Placement Facilities	Internal Training (Aptitude, Communication & soft skill, Technical (C,C++,Java)), External Training (Aptitude, Communication& soft skill, Technical(C,C++,Java)), Mock Interview, Online Assessment, Ebox, Company Specific Training, Guest Lecture, Departmentwise Technical Training, Code vita and Enginex Contest Training.	Internal Training (Aptitude, Communication & soft skill, Technical (C,C++,Java)), External Training (Aptitude, Communication& soft skill, Technical(C,C++,Java)), Mock Interview, Online Assessment, Ebox, Company Specific Training, Guest Lecture, Departmentwise Technical Training, Code vita and Enginex Contest Training.	Internal Training (Aptitude, Communication & soft skill, Technical (C,C++,Java)), External Training (Aptitude, Communication& soft skill, Technical(C,C++,Java)), Mock Interview, Online Assessment, Ebox, Company Specific Training, Guest Lecture, Departmentwise Technical Training, Code vita and Enginex Contest Training.	Internal Training (Aptitude, Communication & soft skill, Technical (C,C++,Java)), External Training (Aptitude, Communication& soft skill, Technical(C,C++,Java)), Mock Interview, Online Assessment, Ebox, Company Specific Training, Guest Lecture, Departmentwise Technical Training, Code vita and Enginex Contest Training.
Campus placement in last three years with minimum salary, maximum salary and average salary	Minimum- 96000 Maximum- 450000	Minimum- 84000 Maximum-500000	Minimum -79388 Maximum-513600	Minimum -85300 Maximum-550000

Name : **ELECTRONICS AND COMMUNICATION ENGINEERING**

Course : **B.E. ELECTRONICS AND COMMUNICATION ENGINEERING**

Level : **U.G**

	2020-21	2019-20	2018-19	2017-18
Number of Seats	180	180	180	180
Duration	4	4	4	4
Year wise Actual Admissions	145	180	146	163
Cut off marks/rank of admission during the last three years	Minimum 80.00 Maximum 169.50	Minimum 80.00 Maximum 183.50	Minimum 115.25 Maximum 78.75	Minimum 149 Maximum 193.00
Fee	MGT-85000 TNEA - 50000	MGT-85000 TNEA - 50000	MGT-85000 TNEA - 50000	MGT-70000 TNEA - 55000
Placement Facilities	Internal Training (Aptitude, Communication & soft skill, Technical (C,C++,Java)), External Training (Aptitude, Communication& soft skill, Technical(C,C++,Java)), Mock Interview, Online Assessment, Ebox, Company Specific Training, Guest Lecture, Departmentwise Technical Training, Code vita and Enginex Contest Training.	Internal Training (Aptitude, Communication & soft skill, Technical (C,C++,Java)), External Training (Aptitude, Communication& soft skill, Technical(C,C++,Java)), Mock Interview, Online Assessment, Ebox, Company Specific Training, Guest Lecture, Departmentwise Technical Training, Code vita and Enginex Contest Training.	Internal Training (Aptitude, Communication & soft skill, Technical (C,C++,Java)), External Training (Aptitude, Communication& soft skill, Technical(C,C++,Java)), Mock Interview, Online Assessment, Ebox, Company Specific Training, Guest Lecture, Departmentwise Technical Training, Code vita and Enginex Contest Training.	Internal Training (Aptitude, Communication & soft skill, Technical (C,C++,Java)), External Training (Aptitude, Communication& soft skill, Technical(C,C++,Java)), Mock Interview, Online Assessment, Ebox, Company Specific Training, Guest Lecture, Departmentwise Technical Training, Code vita and Enginex Contest Training.
Campus placement in last three years with minimum salary, maximum salary and average salary	Minimum- 84000 Maximum- 450884	Minimum- 84000 Maximum- 420000	Minimum -78000 Maximum-550000	Minimum -94950 Maximum-397276

Name : **ELECTRICAL AND ELECTRONICS ENGINEERING**

Course : **B.E. ELECTRICAL AND ELECTRONICS ENGINEERING**

Level : **U.G**

	2020-21	2019-20	2018-19	2017-18
Number of Seats	120	120	120	120
Duration	4	4	4	4
Year wise Actual Admissions	77	107	89	86
Cut off marks/rank of admission during the last three years	Minimum 80.00 Maximum 181.50	Minimum 78.00 Maximum 170.50	Minimum 180.5 Maximum 78.75	Minimum 113.50 Maximum 187.50
Fee	MGT-85000 TNEA - 50000	MGT-85000 TNEA - 50000	MGT-50000 TNEA - 50000	MGT-70000 TNEA - 55000
Placement Facilities	Internal Training (Aptitude, Communication & soft skill, Technical (C,C++,Java)), External Training (Aptitude, Communication& soft skill, Technical(C,C++,Java)), Mock Interview, Online Assessment, Ebox, Company Specific Training, Guest Lecture, Departmentwise Technical Training, Code vita and Enginex Contest Training.	Internal Training (Aptitude, Communication & soft skill, Technical (C,C++,Java)), External Training (Aptitude, Communication& soft skill, Technical(C,C++,Java)), Mock Interview, Online Assessment, Ebox, Company Specific Training, Guest Lecture, Departmentwise Technical Training, Code vita and Enginex Contest Training.	Internal Training (Aptitude, Communication & soft skill, Technical (C,C++,Java)), External Training (Aptitude, Communication& soft skill, Technical(C,C++,Java)), Mock Interview, Online Assessment, Ebox, Company Specific Training, Guest Lecture, Departmentwise Technical Training, Code vita and Enginex Contest Training.	Internal Training (Aptitude, Communication & soft skill, Technical (C,C++,Java)), External Training (Aptitude, Communication& soft skill, Technical(C,C++,Java)), Mock Interview, Online Assessment, Ebox, Company Specific Training, Guest Lecture, Departmentwise Technical Training, Code vita and Enginex Contest Training.
Campus placement in last three years with minimum salary, maximum salary and average salary	Minimum- 120000 Maximum- 401988	Minimum-84000 Maximum- 401986	Minimum -84000 Maximum-550000	Minimum -97080 Maximum-383755

Name : **INFORMATION TECHNOLOGY**

Course : **B.Tech. INFORMATION TECHNOLOGY**

Level : **U.G.**

	2020-21	2019-20	2018-19	2017-18
Number of Seats	60	60	60	60
Duration	4	4	4	4
Year wise Actual Admissions	53	60	58	57
Cut off marks/rank of admission during the last three years	Minimum 80.50 Maximum 156.50	Minimum 85.50 Maximum 172.25	Minimum 93.25 Maximum 177.50	Minimum 112.00 Maximum 179.00
Fee	MGT-85000 TNEA - 55000	MGT-85000 TNEA - 55000	MGT-85000 TNEA - 50000	MGT-70000 TNEA - 55000
Placement Facilities	Internal Training (Aptitude, Communication & soft skill, Technical (C,C++,Java)), External Training (Aptitude, Communication& soft skill, Technical(C,C++,Java)), Mock Interview, Online Assessment, Ebox, Company Specific Training, Guest Lecture, Departmentwise Technical Training, Code vita and Enginex Contest Training.	Internal Training (Aptitude, Communication & soft skill, Technical (C,C++,Java)), External Training (Aptitude, Communication& soft skill, Technical(C,C++,Java)), Mock Interview, Online Assessment, Ebox, Company Specific Training, Guest Lecture, Departmentwise Technical Training, Code vita and Enginex Contest Training.	Internal Training (Aptitude, Communication & soft skill, Technical (C,C++,Java)), External Training (Aptitude, Communication& soft skill, Technical(C,C++,Java)), Mock Interview, Online Assessment, Ebox, Company Specific Training, Guest Lecture, Departmentwise Technical Training, Code vita and Enginex Contest Training.	Internal Training (Aptitude, Communication & soft skill, Technical (C,C++,Java)), External Training (Aptitude, Communication& soft skill, Technical(C,C++,Java)), Mock Interview, Online Assessment, Ebox, Company Specific Training, Guest Lecture, Departmentwise Technical Training, Code vita and Enginex Contest Training.
Campus placement in last three years with minimum salary, maximum salary and average salary	Minimum- 84000 Maximum- 401988	Minimum- 84000 Maximum- 401986	Minimum -82231 Maximum-500000	Minimum -96000 Maximum-1250000

Name : **CIVIL ENGINEERING**

Course : **B.E. CIVIL ENGINEERING**

Level : **U.G.**

	2020-21	2019-20	2018-19	2017-18
Number of Seats	120	120	180	180
Duration	4	4	4	4
Year wise Actual Admissions	66	92	88	131
Cut off marks/rank of admission during the last three years	Minimum 80.00 Maximum 137.00	Minimum 79.00 Maximum 154.00	Minimum 80.00 Maximum 171.00	Minimum 126.25 Maximum 182.75
Fee	MGT-85000 TNEA - 50000	MGT-85000 TNEA - 50000	MGT-50000 TNEA - 50000	MGT-70000 TNEA - 50000
Placement Facilities	Internal Training (Aptitude, Communication & soft skill, Technical (C,C++,Java)), External Training (Aptitude, Communication& soft skill, Technical(C,C++,Java)), Mock Interview, Online Assessment, Ebox, Company Specific Training, Guest Lecture, Departmentwise Technical Training, Code vita and Enginex Contest Training.	Internal Training (Aptitude, Communication & soft skill, Technical (C,C++,Java)), External Training (Aptitude, Communication& soft skill, Technical(C,C++,Java)), Mock Interview, Online Assessment, Ebox, Company Specific Training, Guest Lecture, Departmentwise Technical Training, Code vita and Enginex Contest Training.	Internal Training (Aptitude, Communication & soft skill, Technical (C,C++,Java)), External Training (Aptitude, Communication& soft skill, Technical(C,C++,Java)), Mock Interview, Online Assessment, Ebox, Company Specific Training, Guest Lecture, Departmentwise Technical Training, Code vita and Enginex Contest Training.	Internal Training (Aptitude, Communication & soft skill, Technical (C,C++,Java)), External Training (Aptitude, Communication& soft skill, Technical(C,C++,Java)), Mock Interview, Online Assessment, Ebox, Company Specific Training, Guest Lecture, Departmentwise Technical Training, Code vita and Enginex Contest Training.
Campus placement in last three years with minimum salary, maximum salary and average salary	Minimum- 96000 Maximum-200000	Minimum- 84000 Maximum- 308000	Minimum-120000 Maximum-300000	Minimum -102000 Maximum-400000

Name : **AGRICULTURE ENGINEERING**

Course : **B.E. AGRICULTURE ENGINEERING**

Level : **U.G**

	2020-21	2019-20	2018-19	2017-18
Number of Seats	60	60	60	60
Duration	4	4	4	4
Year wise Actual Admissions	56	65	59	59
Cut off marks/rank of admission during the last three years	Minimum 80.00 Maximum 160.00	Minimum 80.00 Maximum 172.00	Minimum 142.00 Maximum 183.75	Minimum 131.25 Maximum 185.00
Fee	MGT-85000 TNEA - 50000	MGT-85000 TNEA - 50000	MGT-85000 TNEA - 50000	MGT-70000 TNEA - 50000
Placement Facilities	Internal Training (Aptitude, Communication & soft skill, Technical (C,C++,Java)), External Training (Aptitude, Communication& soft skill, Technical(C,C++,Java)), Mock Interview, Online Assessment, Ebox, Company Specific Training, Guest Lecture, Departmentwise Technical Training, Code vita and Enginex Contest Training.	Internal Training (Aptitude, Communication & soft skill, Technical (C,C++,Java)), External Training (Aptitude, Communication& soft skill, Technical(C,C++,Java)), Mock Interview, Online Assessment, Ebox, Company Specific Training, Guest Lecture, Departmentwise Technical Training, Code vita and Enginex Contest Training.	NIL	NIL
Campus placement in last three years with minimum salary, maximum salary and average salary	Minimum- 180000 Maximum- 180000	Minimum-72000 Maximum- 180000	Minimum -Nil Maximum-Nil	Minimum -Nil Maximum-Nil

Name : **BIOMEDICAL ENGINEERING**

Course : **B.E. BIOMEDICAL ENGINEERING**

Level : **U.G**

	2020-21	2019-20	2018-19	2017-18
Number of Seats	60	60	60	60
Duration	4	4	4	4
Year wise Actual Admissions	56	60	51	55
Cut off marks/rank of admission during the last three years	Minimum 80.00 Maximum 162.50	Minimum 80.00 Maximum 167.00	Minimum 98.75 Maximum 190.50	Minimum 111.00 Maximum 191.50
Fee	MGT-85000 TNEA - 50000	MGT-85000 TNEA - 50000	MGT-85000 TNEA - 50000	MGT-70000 TNEA - 50000
Placement Facilities	Internal Training (Aptitude, Communication & soft skill, Technical (C,C++,Java)), External Training (Aptitude, Communication& soft skill, Technical(C,C++,Java)), Mock Interview, Online Assessment, Ebox, Company Specific Training, Guest Lecture, Departmentwise Technical Training, Code vita and Enginex Contest Training.	Internal Training (Aptitude, Communication & soft skill, Technical (C,C++,Java)), External Training (Aptitude, Communication& soft skill, Technical(C,C++,Java)), Mock Interview, Online Assessment, Ebox, Company Specific Training, Guest Lecture, Departmentwise Technical Training, Code vita and Enginex Contest Training.	NIL	NIL
Campus placement in last three years with minimum salary, maximum salary and average salary	Minimum- 120000 Maximum- 300000	Minimum- 144000 Maximum- 437500	Minimum -Nil Maximum-Nil	Minimum -Nil Maximum-Nil

Name : **CHEMICAL ENGINEERING**

Course : **B.TECH. CHEMICAL ENGINEERING**

Level : **U.G.**

	2020-21	2019-20	2018-19	2017-18
Number of Seats	60	60	60	60
Duration	4	4	4	4
Year wise Actual Admissions	38	45	25	35
Cut off marks/rank of admission during the last three years	Minimum 80.00 Maximum 137.00	Minimum 80.00 Maximum 167.00	Minimum 110.25 Maximum 177.25	Minimum 115.75 Maximum 184.50
Fee	MGT-85000 TNEA - 50000	MGT-85000 TNEA - 50000	MGT-50000 TNEA - 50000	MGT-70000 TNEA - 50000
Placement Facilities	Internal Training (Aptitude, Communication & soft skill, Technical (C,C++,Java)), External Training (Aptitude, Communication& soft skill, Technical(C,C++,Java)), Mock Interview, Online Assessment, Ebox, Company Specific Training, Guest Lecture, Departmentwise Technical Training, Code vita and Enginex Contest Training.	Internal Training (Aptitude, Communication & soft skill, Technical (C,C++,Java)), External Training (Aptitude, Communication& soft skill, Technical(C,C++,Java)), Mock Interview, Online Assessment, Ebox, Company Specific Training, Guest Lecture, Departmentwise Technical Training, Code vita and Enginex Contest Training.	Internal Training (Aptitude, Communication & soft skill, Technical (C,C++,Java)), External Training (Aptitude, Communication& soft skill, Technical(C,C++,Java)), Mock Interview, Online Assessment, Ebox, Company Specific Training, Guest Lecture, Departmentwise Technical Training, Code vita and Enginex Contest Training.	NIL
Campus placement in last three years with minimum salary, maximum salary and average salary	Minimum- 120000 Maximum- 180000	Minimum- 120000 Maximum- 308000	Minimum -102000 Maximum-360000	Minimum -Nil Maximum-Nil

Name : **COMPUTER SCIENCE AND BUSINESS SYSTEMS**

Course : **B.TECH. COMPUTER SCIENCE AND BUSINESS SYSTEM**

Level : **U.G**

	2020-21	2019-20	2018-19	2017-18
Number of Seats	60	Nil	Nil	Nil
Duration	4	Nil	Nil	Nil
Year wise Actual Admissions	47	Nil	Nil	Nil
Cut off marks/rank of admission during the last three years	Minimum 80.00 Maximum 173.00	Nil	Nil	Nil
Fee	MGT-85000 TNEA - 50000	Nil	Nil	Nil
Placement Facilities	Nil	Nil	Nil	Nil
Campus placement in last three years with minimum salary, maximum salary and average salary	Nil	Nil	Nil	Nil

Name : **BIOTECHNOLOGY**

Course : **B.TECH. BIOTECHNOLOGY**

Level : **U.G**

	2020-21	2019-20	2018-19	2017-18
Number of Seats	60	Nil	Nil	Nil
Duration	4	Nil	Nil	Nil
Year wise Actual Admissions	38	Nil	Nil	Nil
Cut off marks/rank of admission during the last three years	Minimum 80.00 Maximum 171.00	Nil	Nil	Nil
Fee	MGT-85000 TNEA - 50000	Nil	Nil	Nil
Placement Facilities	Nil	Nil	Nil	Nil
Campus placement in last three years with minimum salary, maximum salary and average salary	Nil	Nil	Nil	Nil

Name : **CAD/CAM**

Course : **M.E. CAD/CAM**

Level : **P.G.**

	2020-21	2019-20	2018-19	2017-18
Number of Seats	18	18	18	18
Duration	2	2	2	2
Year wise Actual Admissions	18	8	9	4
Cut off marks/rank of admission during the last three years	NA	NA	NA	NA
Fee	MGT-10000	MGT-10000	MGT-10000	MGT-50000 TNEA-50000
Placement Facilities	Nil	Nil	Nil	Nil
Campus placement in last three years with minimum salary, maximum salary and average salary	Minimum -Nil Maximum-Nil	Minimum -Nil Maximum-Nil	Minimum -Nil Maximum-Nil	Minimum -Nil Maximum-Nil

Name : **COMPUTER SCIENCE AND ENGINEERING**

Course : **M.E. COMPUTER SCIENCE AND ENGINEERING**

Level : **P.G.**

	2020-21	2019-20	2018-19	2017-18
Number of Seats	18	18	18	18
Duration	2	2	2	2
Year wise Actual Admissions	15	7	9	6
Cut off marks/rank of admission during the last three years	NA	NA	NA	NA
Fee	MGT-15000	MGT-15000	MGT-15000	MGT-50000 TNEA-50000
Placement Facilities	Nil	Nil	Nil	Nil
Campus placement in last three years with minimum salary, maximum salary and average salary	Minimum -Nil Maximum-Nil	Minimum -Nil Maximum-Nil	Minimum -Nil Maximum-Nil	Minimum -Nil Maximum-Nil

Name : **COMMUNICATION SYSTEMS**

Course : **M.E. COMMUNICATION SYSTEMS**

Level : **P.G.**

	2020-21	2019-20	2018-19	2017-18
Number of Seats	18	18	18	18
Duration	2	2	2	2
Year wise Actual Admissions	16	6	18	4
Cut off marks/rank of admission during the last three years	NA	NA	NA	NA
Fee	MGT-15000	MGT-15000	MGT-15000	MGT-50000 TNEA-50000
Placement Facilities	Nil	Nil	Nil	Nil
Campus placement in last three years with minimum salary, maximum salary and average salary	Minimum -Nil Maximum-Nil	Minimum -Nil Maximum-Nil	Minimum -Nil Maximum-Nil	Minimum -Nil Maximum-Nil

Name : **POWER ELECTRONICS AND DRIVES**

Course : **M.E. POWER ELECTRONICS AND DRIVES**

Level : **P.G.**

	2020-21	2019-20	2018-19	2017-18
Number of Seats	18	18	18	18
Duration	2	2	2	2
Year wise Actual Admissions	13	7	6	2
Cut off marks/rank of admission during the last three years	NA	NA	NA	NA
Fee	MGT-10000	MGT-10000	MGT-10000	MGT-50000 TNEA-50000
Placement Facilities	Nil	Nil	Nil	Nil
Campus placement in last three years with minimum salary, maximum salary and average salary	Minimum -Nil Maximum-Nil	Minimum -Nil Maximum-Nil	Minimum -Nil Maximum-Nil	Minimum -Nil Maximum-Nil

Name : **STRUCTURAL ENGINEERING**

Course : **M.E. STRUCTURAL ENGINEERING**

Level : **P.G.**

	2020-21	2019-20	2018-19	2017-18
Number of Seats	18	18	18	18
Duration	2	2	2	2
Year wise Actual Admissions	18	18	16	12
Cut off marks/rank of admission during the last three years	NA	NA	NA	NA
Fee	MGT-25000	MGT-25000	MGT-25000	MGT-50000 TNEA-50000
Placement Facilities	Nil	Nil	Nil	Nil
Campus placement in last three years with minimum salary, maximum salary and average salary	Minimum -Nil Maximum-Nil	Minimum -Nil Maximum-Nil	Minimum -Nil Maximum-Nil	Minimum -Nil Maximum-Nil

7. Faculty

Department	Web Page Link
Mechanical Engineering	http://sethu.ac.in/dept/Mech/edited%20faculty.html
Computer Science and Engineering	http://sethu.ac.in/dept/CSE/index.html
Electronics and Communication Engineering	http://sethu.ac.in/dept/ECE/#Faculty
Electrical and Electronics Engineering	http://sethu.ac.in/dept/EEE/Faculty.html
Information Technology	http://sethu.ac.in/dept/IT/#Faculty
Civil Engineering	http://sethu.ac.in/dept/CIVIL/faculty.php
Chemical Engineering	http://sethu.ac.in/dept/CHEMICAL/faculty.php
Biomedical Engineering	http://sethu.ac.in/dept/Biomedical/faculty.php
Agriculture Engineering	http://sethu.ac.in/dept/agri/faculty.php
Computer Science and Business Systems	https://sethu.ac.in/computer-science-and-business-system/
Biotechnology	https://sethu.ac.in/biotechnology/
Science & Humanities	http://sethu.ac.in/dept/SH/faculty.php

8. Profile of Principal : <https://sethu.ac.in/principal/>

9. Fee

FEE STRUCTURE

By Committee on Fee Fixation, Tamil Nadu

Ref.No: Proceedings.NO.CFF/Engineering/Fees/2020 Dated: 30.11.2020

The following fee structure will take effect for the batch of the students admitted from the academic year 2020-2021.

Sl. No	Name of the Course	Accredited Status	Fee fixed by the Committee Rs.	Remarks
1	B.E./B.TECH./B.Arch. (Category – I) Government Quota	Non-Accredited Courses	50,000/Annum	The fee is an all inclusive annual fee including various fees like Tuition fee, Admission fee, Special fee, Laboratory / Computer Internet fee, Library fee, Sports fee, Maintenance and Amenities fee, Extracurricular activities fee, and other recurring expenditure.
		Accredited Courses	55,000/Annum	
2	B.E./B.TECH./B.Arch. (Category – II) Management Quota	Non-Accredited Courses	95,000/Annum	
		Accredited Courses	97,000/Annum	
4	ME/M.Tech./M.Arch.	Non-Accredited Courses	25,000/Semester	
		Accredited Courses	30,000/Semester	

- **Time schedule for payment of fee for the entire programme**

Total duration of the Course:

B.E./B.Tech. Degree : 4 Years (Regular) & 3 Years (Lateral Entry)

M.E. Degree : 2 Years (Regular)

Time Schedule for Payment of Fee: One Time per Year.

- No. of Fee waivers granted with amount and name of students - NIL

- Number of scholarship offered by the Institution, duration and amount

CONCESSION AVAILED FOR THE YEAR 2020-21			
SL NO	PARTICULARS	NO OF STUDENTS	AMOUNT
1	I YEAR	132	9,84,400
2	II YEAR	545	1,29,59,100
3	III YEAR	279	97,24,050
4	IV YEAR	120	23,70,550
TOTAL			2,60,38,100

- **Criteria for fee waivers/scholarship**

AICTE Tuition Fee Waiver (TFW) Scheme

This scheme is applicable in Self-Financing Engineering Colleges and Self-Supporting courses in Government Aided Engineering Colleges only. AICTE Tuition fee waiver scheme is applicable for B.E./B.Tech. courses only. Seats up to a maximum of 5 percent of sanctioned intake per course may be available under the scheme. Tuition fee waiver under First Graduate scheme is provided by Government whereas, AICTE TFW scheme is provided by the Management of the Institution. Sons and daughters of parents whose annual income is less than Rs.4.50 lakhs from all sources shall only be eligible under this scheme.

All other fees except tuition fee will have to be paid by the candidate under both First Graduate Fee Concession and Fee Waiver. Beneficiary student admitted under AICTE TFW scheme will not be allowed to change Institution / course under any circumstances.

Post Matric Scholarship

In the G.O. (st) No. 6 Adi Dravidar and Tribal Welfare (AD3) Department dated 09.01.2012, G.O. (st) No. 92 Adi Dravidar and Tribal Welfare (AD3) Department dated 11.09.2012 and G.O. (st) No. 16 Adi Dravidar and Tribal Welfare (AD3) Department dated 24.02.2014, the Government have ordered to grant Post Matric Scholarship to SC/SCA/ST candidates, whose parental annual income is less than Rs.2,50,000/- and for SC/SCA converted Christians annual income less than Rs.2,00,000/- from all the sources shall only be eligible. The eligible candidates have to submit income certificate obtained from appropriate authorities and get the Post Matric Scholarship from the colleges where they get admitted.

- Estimated cost of Boarding and Lodging in Hostels - **Rs 58,500/- (Per Year)**

10. Admission

- Number of seats sanctioned with the year of approval

B.E./B.Tech. Degree Courses

Sl. No	B.E./B.Tech. Degree Course	2021-22	2020-21	2019-20	2018-19	2017-18
1	Mechanical Engineering	180	240	240	240	240
2	Computer Science and Engineering	180	180	180	180	180
3	Electronics and Communication Engg.	180	180	180	180	180
4	Electricals and Electronics Engineering	120	120	120	120	120
5	Information Technology	60	60	60	60	60
6	Civil Engineering	60	120	180	180	180
7	Chemical Engineering	60	60	60	60	60
8	Agriculture Engineering	60	60	60	60	60
9	Biomedical Engineering	60	60	60	60	60
10	Computer Science and Business Systems	60	60	-	-	-
11	Biotechnology	60	60	-	-	-
12	Artificial Intelligence & Data Science	60	-	-	-	-
13	Computer Science and Design	60	-	-	-	-
TOTAL INTAKE		1200	1200	1080	1140	1140

M.E-Degree Courses

Sl. No	M.E-Degree Course	2021-22	2020-21	2019-20	2018-19	2017-18
1	M.E-CAD/CAM	18	18	18	18	18
2	M.E-Communication Systems	18	18	18	18	18
3	M.E - Computer Science and Engineering	18	18	18	18	18
4	M.E- Power Electronics and Drives	18	18	18	18	18
5	M.E - Structural Engineering	18	18	18	18	18
TOTAL INTAKE		90	90	90	90	90

- Number of Students admitted under various categories each year in the last three years

FIRST YEAR

Si. No	Department	2020-21	ADMITTED STRENGTH		2019-20	ADMITTED STRENGTH		2018-19	ADMITTED STRENGTH	
		TOTAL	GQ	MQ	TOTAL	GQ	MQ	TOTAL	GQ	MQ
		INTAKE								
1	Mechanical Engg	240	86	14	240	143	76	240	118	77
2	Computer Science Engg	180	102	76	180	106	75	180	96	84
3	Electronics and Communication Engg.	180	80	65	180	96	84	180	94	54
4	Electrical and Electronics Engg.	120	63	14	120	64	43	120	56	33
5	Information Technology	60	34	19	60	36	24	60	29	29
6	Civil Engineering	120	50	16	120	55	37	180	45	42
7	Chemical Engineering	60	32	6	60	30	16	60	10	13
8	Bio Medical Engg	60	29	27	60	33	27	60	31	20
9	Agriculture Engg	60	32	24	60	35	30	60	37	22
10	Computer Science and Business System	60	25	22	-	-	-	-	-	-
11	Biotechnology	60	16	22	-	-	-	-	-	-
TOTAL		1200	549	305	1080	598	412	1140	516	374
CONSOLIDATED TOTAL		1200	854		1080	1010		1140	890	

LATERAL ENTRY

Si. No	Department	2020-21 ADMITTED STRENGTH			2019-20 ADMITTED STRENGTH			2018-19 ADMITTED STRENGTH		
		GQ	MQ	TOTAL	GQ	MQ	TOTAL	GQ	MQ	TOTAL
1	Mechanical Engg	14	36	50	26	43	69	25	29	54
2	Computer Science Engg	4	6	10	8	5	13	1	1	2
3	Electronics and Communication Engg.	3	2	5	8	3	11	3	2	5
4	Electrical and Electronics Engg.	6	19	25	12	18	30	11	9	20
5	Information Technology	1	1	2	0	0	0	0	1	1
6	Civil Engineering	8	22	30	23	29	52	24	27	51
7	Chemical Engineering	1	0	1	0	0	0	0	1	1
8	Bio Medical Engg	0	1	1	0	0	0	0	1	1
9	Agriculture Engg	0	1	1	0	0	0	0	0	0
TOTAL		37	88	125	77	98	175	64	71	135

M.E DEGREE

S. No	Dept	2020-21			2019-20			2018-19		
		GQ	MQ	Total	GQ	MQ	Total	GQ	MQ	Total
1	M.E - Structural Engineering	NA	18	18	2	16	18	NA	16	16
2	M.E - CAD / CAM	NA	18	18	0	8	8	NA	9	9
3	M.E - Communication Systems	NA	16	16	0	6	6	NA	18	18
4	M.E - Computer Science & Engineering	NA	15	15	0	7	7	NA	9	9
5	M.E - Power Electronics & Drives	NA	13	13	0	7	7	NA	6	6
TOTAL		0	80	80	2	44	46	0	58	58

Number of applications received during last two years for admission under Management Quota and number admitted.

Si. No	I YEAR		LATERAL ENTRY		ME DEGREE	
	No. of Application Received	No. of Students Admitted	No. of Application Received	No. of Students Admitted	No. of Application Received	No. of Students Admitted
2020-21	418	305	131	88	109	80
2019-20	560	412	148	98	71	44
2018-19	492	374	113	71	65	58

11. Admission Procedure

Mention the admission test being followed, name and address of the Test Agency and its URL	NOT APPLICABLE
Number of seats allotted to different Test Qualified candidate separately (AIEEE/ CET (State conducted test/ University tests/ CMAT/ GPAT)/ Association conducted test)	NOT APPLICABLE
Calendar for admission against Management/vacant seats	May to July [Every Year]
Last date of request for applications	As per Tamilnadu Engineering Admissions & Self Financing Engineering Colleges Management Association Guidelines

Last date of submission of applications	As per Tamilnadu Engineering Admissions & Self Financing Engineering Colleges Management Association Guidelines
Dates for announcing final results	As per Tamilnadu Engineering Admissions & Self Financing Engineering Colleges Management Association Guidelines
Release of admission list (main list and waiting list shall be announced on the same day)	As per Tamilnadu Engineering Admissions & Self Financing Engineering Colleges Management Association Guidelines
Date for acceptance by the candidate (time given shall in no case be less than 15 days)	As per Tamilnadu Engineering Admissions & Self Financing Engineering Colleges Management Association Guidelines
Last date for closing of admission	As per Tamilnadu Engineering Admissions & Self Financing Engineering Colleges Management Association Guidelines
Starting of the Academic session	[As per Anna University, Chennai Guidelines]
The waiting list shall be activated only on the expiry of date of main list	--
The policy of refund of the fee, in case of withdrawal, shall be clearly notified	As per Anna University, Chennai Guidelines

12. Criteria and Weightages for Admission

Describe each criteria with its respective weightages i.e. Admission Test, marks in qualifying examination etc.

Mention the minimum level of acceptance, if any

Eligibility Criteria

Admission Eligibility to First Year B.E./B.TECH

Candidates of HSC (Academic) and Other Equivalent Examinations:

A pass in the HSC (Academic) or its equivalent with a minimum average percentage in Mathematics, Physics and Chemistry put together as given below.

Sl.No	Community	A Pass with Minimum average marks in Mathematics Physics and Chemistry put together
1.	General Category	45.00%
2.	Backward Class including Backward Class Muslim	40.00%
3.	MBC & DNC	40.00%
4.	SC/SCA/SCT	40.00%

(OR)

Candidates of HSC (Vocational):

A pass in any one of the HSC (Vocational Subject) as given below with any one of the Engineering related subjects namely Mathematics, Physics or Chemistry with a minimum average percentage put together as given below.

Sl.No	Community	A Pass with Minimum average marks in any of the related subjects (Mathematics Physics, Chemistry), Vocational Theory and Practical put together
1.	General Category	45.00%
2.	Backward Class including Backward Class Muslim	40.00%
3.	MBC & DNC	40.00%
4.	SC/SCA/SCT	40.00%

Vocational Courses prescribed for B.E. / B.Tech. Degree Admission

Group Code	Name of the Vocational Subjects
421	General Machinist
422	Electrical Machines and Appliances
423	Electronic Equipments
424	Draughtsman Civil
425	Auto Mechanic
426	Textile Technology

Note:

1. When the candidates produce grade certificates, they have to produce the actual marks also otherwise only the minimum marks applicable to the grades in the eligible subjects (Mathematics, Physics, Chemistry and Fourth Optional Subject) shall be taken into account.
2. For minimum eligibility rounding of marks and normalised marks will not be considered

NON RESIDENT INDIAN – NRI

MINIMUM ELIGIBILITY MARKS FOR NRI

Sl.No	Community	A Pass with Minimum Average Marks in Mathematics, Physics and Chemistry put together in the qualifying examinations
1	General Category (OC)	45%
2	Reserved Categories including BC/BCM/MBC/DNC/SC/SCA/ST	40%

FN/PIO/OCI /CIWGC

MINIMUM ELIGIBILITY MARKS FOR FN/OCI/PIO/CIWGC

Sl.No	Community	A Pass with Minimum Average Marks in Mathematics, Physics and Chemistry put together in the qualifying examinations
1	General Category (Only one Category)	45%

Admission Eligibility to Second Year B.E./B.TECH under Lateral Entry (For Diploma and B.Sc., Candidates)

Community	Minimum Eligibility Marks
General Category	55.00%
Backward Class including Backward Class Muslim	50.00%
Most Backward Class and Denotified Communities	45.00%
SC/ SCA/ ST	Mere pass in the qualifying Examination

Mode of Study	Qualifying Examination marks to be considered for calculation of minimum eligibility marks
Full Time Diploma/ B.Sc	Overall percentage of marks obtained by the candidate from 1 st semester to 6 th semester
Lateral Entry Diploma	Overall percentage of marks obtained by the candidate from 3 rd semester to 6 th semester
Sandwich Diploma	Overall percentage of marks obtained by the candidate from 1 st semester to 7 th semester excluding the in-plant training marks
Part Time Diploma	Overall percentage of marks obtained by the candidate from 1 st semester to 8 th semester

Engineering and Technology (Lateral Entry to Second year) 3 years (As per AICTE APPROVAL PROCESS HANDBOOK 2020 – 21)

- Passed Diploma examination with at least 45% marks (40% marks in case of candidates belonging to reserved category) **in ANY branch of Engineering and Technology.**
- Passed B.Sc. Degree from a recognized University as defined by UGC, with at least 45% marks (40% marks in case of candidates belonging to reserved category) and passed 10+2 examination with Mathematics as a subject.
- Provided that the students belonging to B.Sc. Stream, shall clear the subjects Engineering Graphics/ Engineering Drawing and Engineering Mechanics of the First Year Engineering Programme along with the Second year subjects.
- Provided that the students belonging to B.Sc. Stream shall be considered only after filling the supernumerary seats in this category with students belonging to the Diploma stream.
- Passed D.Voc. Stream in the same or allied sector.
- In the above cases, a suitable bridge Courses, if required such as in Mathematics may be conducted.

Note:

- When the candidates produce grade certificates, they have to produce the actual marks also otherwise only the minimum marks applicable to the grades will be taken into account.
- For minimum eligibility rounding of marks and normalised marks will not be considered.

Eligibility Requirements for M.E:

A pass in a recognised Bachelor's degree or equivalent in the relevant field and obtained atleast 50% (45 % in the case of candidates belonging to reserved category) in the qualifying B.E./B.Tech degree examination.

Note:

- Candidates admitted through Lateral Entry in degree courses are not eligible except B.E./B.Tech.
- Candidates with B.E./B.Tech., Degrees obtained through Distance mode/Week End courses are not eligible

Mention the cut-off levels of percentage and percentile score of the candidates in the admission test for the last three years

a)

B.E DEGREE (I YEAR)

RANK DETAILS																		
2017-18																		
	AGRI ENGG		BIO-MEDICAL		CIVIL ENGG		CHEMICAL		CSE		ECE		EEE		IT		MECH	
ALLOTTED COMMUNITY	MAX	MIN	MAX	MIN	MAX	MIN	MAX	MIN	MAX	MIN	MAX	MIN	MAX	MIN	MAX	MIN	MAX	MIN
OC	185.00	162.50	191.50	166.50	182.75	133.75	184.50	154.50	181.00	159.00	193.00	161.25	187.50	140.25	179.00	139.50	183.00	156.00
BC	160.75	147.50	164.50	157.00	132.25	105.25	149.00	141.75	157.50	142.75	160.00	148.25	139.50	133.75	139.50	137.00	155.75	146.50
BCM	146.00	-	166.25	-	133.75	122.75	120.00	-	152.25	142.50	158.00	137.25	138.75	133.25	138.75	-	155.00	140.50
MBC/DNC	161.75	134.00	159.50	116.00	132.25	96.25	137.50	123.25	158.00	107.25	160.25	104.25	127.50	98.25	139.50	112.00	149.50	117.50
SC	151.75	131.25	151.50	111.00	129.25	126.25	135.25	115.75	139.00	124.75	152.25	149.00	136.00	113.50	-	-	152.00	78.75
ST	-	-	-	-	-	-	-	-	107.50	-	-	-	-	-	-	-	-	-
SCA	-	-	-	-	-	-	-	-	-	-	-	-	-	-	-	-	139.75	-

RANK DETAILS																		
2018-19																		
	AGRI ENGG		BIO-MEDICAL		CIVIL ENGG		CHEMICAL		CSE		ECE		EEE		IT		MECH	
ALLOTTED COMMUNITY	MAX	MIN	MAX	MIN	MAX	MIN	MAX	MIN	MAX	MIN	MAX	MIN	MAX	MIN	MAX	MIN	MAX	MIN
OC	183.75	160.00	190.50	161.75	171.00	80.00	177.25	110.25	180.00	149.50	188.50	144.00	180.50	123.50	177.50	138.25	174.25	130.00
BC	157.50	144.50	161.50	111.75	-	-	-	-	149.00	134.75	143.25	120.00	123.25	94.00	137.50	125.25	145.00	94.50
BCM	145.25	138.75	159.50	-	-	-	-	-	147.25	132.00	142.25	139.00	123.00	97.25	133.50	123.75	127.25	111.75
MBC/DNC	156.75	130.50	149.25	117.25	-	-	-	-	147.25	119.50	140.25	83.50	123.00	86.25	131.75	111.75	125.00	81.25
SC	154.25	142.00	153.00	98.75	-	-	-	-	145.00	97.75	145.75	78.75	121.75	82.75	98.50	93.25	127.50	81.50
ST	-	-	-	-	-	-	-	-	-	-	-	-	-	-	-	-	-	-
SCA	140.75	-	79.00	-	-	-	-	-	-	-	-	-	-	-	97.25	-	92.25	-

RANK DETAILS																		
2019-20																		
	AGRI ENGG		BIO-MEDICAL		CIVIL ENGG		CHEMICAL		CSE		ECE		EEE		IT		MECH	
ALLOTTED COMMUNITY	MAX	MIN	MAX	MIN	MAX	MIN	MAX	MIN	MAX	MIN	MAX	MIN	MAX	MIN	MAX	MIN	MAX	MIN
OC	172.00	143.00	164.00	140.00	154.00	102.00	167.00	118.00	189.50	137.00	157.50	125.00	148.50	112.00	154.00	127.00	177.25	112.50
BC	140.00	106.50	139.00	121.50	121.50	83.00	112.50	90.00	136.50	120.50	124.50	107.50	112.00	90.50	126.00	115.00	112.50	93.00
BCM	141.00	141.00	139.50	118.00	99.00	84.00	143.00	117.50	130.00	125.50	125.00	120.50	107.50	92.50	124.50	124.50	111.50	105.50
MBC/DNC	122.00	91.50	139.50	81.50	122.50	83.50	122.50	109.00	136.50	97.00	131.75	86.00	109.50	84.00	123.50	89.50	117.25	80.00
SC	131.00	100.50	128.50	83.00	132.50	-	113.00	91.50	134.00	80.00	154.00	80.00	109.50	82.00	127.50	99.00	112.75	82.50
ST	-	-	-	-	-	-	-	-	-	-	-	-	-	-	-	-	-	-
SCA									131.00	103.50			87.00	86.50	96.00	96.00	111.50	85.00

RANK DETAILS																						
2020 - 21																						
	AGRI ENGG		BME		BT		CSBS		CIVIL		CHEMICAL		CSE		ECE		EEE		IT		MECH	
ALLOTTED COMMUNITY	Max	Min	Max	Min	Max	Min	Max	Min	Max	Min	Max	Min	Max	Min	Max	Min	Max	Min	Max	Min	Max	Min
OC	-	-	-	-	126.75	126.75	127.50	109.50	-	-	93.50	93.50	141.00	87.50	131.50	131.50	100.50	100.50	140.00	100.50	114.50	95.50
BC	160.00	83.00	162.50	87.00	171.00	82.00	173.00	81.00	135.00	81.00	166.50	80.00	169.00	80.50	169.50	80.00	181.50	83.00	155.00	82.00	144.00	80.00
BCM	112.00	112.00	143.50	80.00	143.50	80.00	129.50	80.00	126.50	83.00	142.00	87.00	156.50	81.00	137.50	83.00	134.00	83.00	135.50	80.50	148.50	83.00
MBC/DNC	144.00	80.00	147.00	94.00	137.00	89.50	99.00	85.00	129.50	82.50	117.00	91.50	152.50	80.50	163.50	82.00	140.50	82.00	156.50	84.00	139.50	80.00
SC	145.00	82.00	122.50	83.50	113.00	90.00	96.50	96.50	137.00	80.00	117.00	84.50	122.50	80.00	107.50	91.00	117.50	80.00	129.00	82.50	106.50	90.50
ST	-	-	-	-	-	-	-	-	-	-	-	-	-	-	-	-	-	-	-	-	-	-
SCA	-	-	94.50	94.50	-	-	-	-	-	-	-	-	124.50	88.00	99.50	99.50	105.00	105.00	-	-	-	-

b) B.E DEGREE (LATERAL ENTRY)

Common application form to seek admission to University Departments, University Colleges, Government and Government aided Engineering Colleges and for the seats surrendered by Self-financing Engineering Colleges under Unified Single Window Admission System for Indian Nationals.

Important Notice:

Application were invited only through online mode for **Admission to Second Year B.E/B.Tech. Degree Courses.**

Copies of the following documents should be enclosed

- Printed online application.
- All Semester Mark Sheets (All appearances) of Diploma./B.Sc. or Equivalent Examinations (Xeroxing both sides).
- Diploma/Degree or Provisional Certificate
- Transfer Certificate
- Permanent Community Certificate Card (except Others(OC) candidates).
- Nativity Certificate –if applicable
- Plus Two Mark Sheet (for B.Sc. and Lateral Entry Diploma candidates)
- First Graduate Certificate -if applicable
- Srilankan Tamil Refugee certificate – if applicable
- Must enclose Your DD (Demand Draft Original) for except (SC, SCA, ST candidates).
- Demand Draft for Rs.300 Drawn in favour of The Secretary Direct Second Year B.E. Admissions 2020,ACGCET,Karaikudi, payable at Karaikudi

Counselling Center: Alagappa Chettiar Government College Of Engineering and Technology, Karaikudi – 630003

Choice of College and Branch: Candidate may choose at the time of counselling.

c) M.E DEGREE

The procedure for seeking admission to MBA, MCA and M.E./M.Tech./M.Arch./M.Plan. Degree programmes for the academic year consists of the following two steps:

1. Appearing for the Tamil Nadu Common Entrance Test (TANCET) In May Every Year.
2. Applying for admission to the admitting authorities concerned. [Management Entrance Test will be conducted by Tirunelveli Anna University of Technology Self Financing Engineering Colleges Management Association and the Rank List will be published in the month of August]

**TIRUNELVELI ANNA UNIVERSITY OF TECHNOLOGY SELF FINANCING ENGINEERING
COLLEGES MANAGEMENT ASSOCIATIONS, MADURAI - 625020**

PROVISIONAL MERIT LIST FOR M.B.A./M.C.A./M.E./M.Tech. PG COURSES – 2020

Sethu Institute of Technology, Pulloor, Kariapatti, Virudhunagar District.

Course : M.E/M.Tech/M.Arch.

RANK	REGNO	NAME	TOTAL MARK
1	1492060	UDHAYANILA R	80.83
2	1492042	SARAVANAA B	80.83
3	1492047	ARCHANA B	80.74
4	1492058	ABDUL LATHEEP M	80.67
5	1492034	VIGNESHWARAN A	80.67
6	1492065	NAVEEN NAVROZ S	80.67
7	1492056	SIVARANJANI A	80.65
8	1492044	NHARHMADHA A S	80.5
9	1492045	RAJMADHU J	80.39
10	1492084	YAMINI M	80.33
11	1492001	BOOPATHI RATHINAM B	80.17
12	1492037	SIVA SUNDAR S	80.17
13	1492005	VINOTHKUMAR M	80
14	1492076	SHANMITHA M	80
15	1492077	MUTHUSARAVANAN R	79.78
16	1492040	NIVEDHA C	79.78
17	1492055	KUMARAN P	79.17
18	1492048	VIJAYA LAKSHMI G	78.91
19	1492010	THANGAM T	78.33
20	1492041	ATCHUTHAN M	78.04
21	1492023	SHANMUGA PRIYA K	78.04
22	1492082	JUDITH J	78.04
23	1492071	SANTHOSH RAJA M G	78.04
24	1492003	SENTHAN AMUTHAN A S	77.5
25	1492026	JOSHI ANGEL SARANYA D	77.17
26	1492063	RAJAKUMAR S	77.17
27	1492039	MAJEETH M	76.67
28	1492051	KARTHIK J	76.67
29	1492030	MARESWARI G	76.3

RANK	REGNO	NAME	TOTAL MARK
30	1492072	PERCY EVANGELIN G	76.3
31	1492002	CRUZ JONATHAN EMERSON FERNANDO G	75.83
32	1492027	NARASIMMARAJAN SU	75.83
33	1492019	LAKSHMI PRABHA G	75.83
34	1492066	GAYATHRI V	75.43
35	1492009	SUNDARA PANDIYAN B	75.43
36	1492008	ARSHAD BURVES AHMED A	75.43
37	1492057	TAMIL ILAKKIYA K	75.43
38	1492052	RAJAVEL K	75
39	1492031	SIVARAJAN M	75
40	1492081	HABIB KHAN N	75
41	1492036	KARTHICK KUMAR V	75
42	1492024	JEYA PRABHU J	74.57
43	1492029	PREETHI CHRISTINA R P	74.57
44	1492064	BRIGHTSON WINFRED GNANAMANI W	74.17
45	1492032	YUVARAJ M	74.17
46	1492004	HAREESH BOSE S	74.17
47	1492075	MOHAMED IBRAHIM A	74.17
48	1492043	VIJAYARAMAN M	73.7
49	1492068	PRASANNA MEENAKSHISUNDARAM V	73.33
50	1492038	MOHAMMED ASIF K	73.33
51	1492080	DINESH KUMAR P	73.33
52	1492017	BALAJI M	73.33
53	1492078	MUTHUKUMAR K	73.33
54	1492073	POOVENDRAN R	72.83
55	1492007	VISALI L	72.83
56	1492067	DEEPADHARSHINI K	72.83
57	1492061	AJMATH BASRA M	72.5
58	1492015	VIMALRAAJ M	72.5
59	1492013	SAI MADHAN M	72.5
60	1492014	VENKATESHWAR S H	72.5
61	1492079	VIGNESHWARI R	71.96
62	1492087	DEEPA P	71.96
63	1492033	SUDHAN A	71.67
64	1492025	ESAKKIMUTHU P	71.67

RANK	REGNO	NAME	TOTAL MARK
65	1492083	JOSVA B	71.67
66	1492085	NAGAVALLI N	71.09
67	1492062	SHANGITH G	70.83
68	1492086	KRISHNAPANDIAN D	70.83
69	1492046	VENGATESHWARAN T	70.83
70	1492059	PRABHU M	70.83
71	1492074	DAISY MERINA R	70.22
72	1492012	RISHI S	70.22
73	1492028	NARMATRA B	70.22
74	1492050	MAHESH KUMAR B	70
75	1492089	PANDIYA RAJAN C	69.35
76	1492006	NAVEENRAJ R	69.17
77	1492069	ASIYA MARIAM A	68.48
78	1492020	ANBARASAN C	68.33
79	1492070	KARTHIK B	68.33
80	1492088	RAJESHWARAN S K	68.33
81	1492022	SITHI HASMAK	67.61
82	1492035	GANESAN P	67.5
83	1492018	MOHAMED FAIZAL J	67.5
84	1492053	ABINAYA P	65.87
85	1492054	ARUNADEVI H	63.26
86	1492021	PRIYADHARSHINI	62.5
87	1492049	HEMALATHA S	58.04
88	3525	PANDEESWARAN M	57.5
89	1493002	VEERA ABINAYA N	54.17
90	3524	MUTHUVEL M	53.33
91	3523	DEEPA P	50.83
92	3526	NITHIMARAN B	50
93	1493001	DURGA DEVI V	50

15. Information of Infrastructure and Other Resources Available

Number of Class Rooms	: 90
Number of Tutorial rooms	: 2
Number of Laboratories	: 72
Number of Drawing Halls	: 6
Number of Computer Centres	: 2
Central Examination Facility, Number of rooms	: ---

Barrier Free Built Environment for disabled and elderly persons

The Institution facilitates the campus with the following:

- Ramps are available in all Departments and Canteen for the easy access of physically disabled students.
- Lift facilities are available to serve the disabled.
- Disability friendly toilet is available in PG Block
- The College has a well-equipped medical room which contains wheel chairs and has been facilitated with a Doctor and a nurse in order to administer first-aid, when necessary.
- Adequate signages are placed at appropriate location in the college which uses fluorescent colors for low vision persons.
- Braille blaster Software is available in central library for the visually challenged students. Braille technology is assistive technology which allows blind or visually impaired people to do common tasks such as writing, browsing the Internet, typing in Braille and printing in text, engaging in chat, downloading files, music, using electronic mail, burning music, and reading documents.

Occupancy Certificate :

https://drive.google.com/file/d/1vKtirq_iwalxaYw4-GLOjz1S6S8ONxGc/view?usp=sharing

Fire and Safety Certificate :

<https://drive.google.com/file/d/1JJt4C9K4SgE7jBFnymCX29Hre3EeEGyG/view?usp=sharing>

Hostel Facilities :

<https://sethu.ac.in/hall-of-residence/>

Library:

<https://sethu.ac.in/library/>

<https://sethu.ac.in/services/>

Computing Facilities

Internet Bandwidth	:	500 Mbps
Number and configuration of System	:	Intel Pentium, Core i3 & i5
Total number of system connected by LAN	:	1360
Total number of system connected by WAN	:	1360
Major software packages available	:	23
Special purpose facilities available	:	Wi-Fi enabled campus & Backup Facility

Laboratory and Workshop

Department	Web Page Link
Mechanical Engineering	http://sethu.ac.in/dept/Mech/fac.html
Computer Science and Engineering	http://sethu.ac.in/dept/CSE/facility.html
Electronics and Communication Engineering	http://sethu.ac.in/dept/ECE/#Facilities
Electrical and Electronics Engineering	http://sethu.ac.in/dept/EEE/facilites.html
Information Technology	http://sethu.ac.in/dept/IT/#Facilities
Civil Engineering	http://sethu.ac.in/dept/CIVIL/facility.php
Biomedical Engineering	http://sethu.ac.in/dept/Biomedical/facility.php
Agriculture Engineering	http://sethu.ac.in/dept/agri/facility.php
Science & Humanities	http://sethu.ac.in/dept/SH/facility.php

Innovation Cell

R&D Innovation Cell consists of a coordinator and faculty representatives from all departments. The responsibilities are to identify innovative technical ideas from faculty members and students, to provide a forum to exhibit their talents in Faculty contest and Student contest, motivating them to convert the innovation to patents, and encouraging them to develop products. There are 6 patents obtained and 11 patents have been filed through innovation cell. It encourages faculty and students in research and helps in implementing innovative ideas across various domains. Students are also encouraged to do innovative projects. Patent awareness programs are conducted to obtain more patents. the best projects are awarded and encouraged to apply for patent by cell

Social Media Cell

Compliance of the National Academic Depository (NAD), applicable to PGCM/ PGDM

Our college registered in the National Academic Depository

List of facilities available

Games and Sports Facilities

Details of Sports Facilities:

To provide opportunities to the students particularly in sports and games activities the following facilities are provided in the campus.

Outdoor facilities

1. Basket Ball Court
2. Volley Ball Court

3. Cricket Ground
4. Foot ball Ground
5. Hockey Ground
6. Badminton Court

Indoor facilities

7. Chess
8. Carom
9. Table tennis
10. Gym for boys (12 station)
11. Gym for girls (4 station)
12. Tumbles - weight lifting
13. Ergo cycle 8. Body shaper

B. Tracks & Fields:

400 meters track, parallel bars, rings and other field events.

C. Awards:

Every year all the students are divided into four houses and intramural sports and games are conducted. It culminates on sports day and awards are given for first three places, in all the events. Depending on individual point per student champion of the year is declared. The house, which gets maximum points, is honoured with a rolling trophy.

Extra-Curricular Activities

Soft Skill Development Facilities

The college has a dedicated team of faculty members to impart exclusive training to the students in Soft skills and personality development. The Training and Placement Cell brings in soft skill trainers and eminent resource persons from various industries for personal enhancement and development. The soft skill training is provided from the first year onwards to enhance the personal development of students.

Communication skill development

The college takes the initiative for enhancement of proficiency in English Language skills from first year onwards. Gradual development of such skills may happen only when the training begins from the first semester. Students of the college are also given a platform to enhance aptitude and verbal skills continuously.

Career guidance

The college offers career guidance for further studies, employment opportunities in government as well as private sectors and also in the field of entrepreneurship. Offering such valuable guidance to the students at the right time makes a great impact in the choice of their career as well as in the progress towards the chosen career. Exposure is given to students on avenues open to students in foreign universities, scholarships and immigration through the Career Guidance Cell which is a part of Placement cell. Students are motivated to participate in competitive exams like, TNPSC, UPSC, Defense services, MONET, GRE, CAT, MAT, GATE, IELTS, TOEFL etc. through Career Guidance Cell.

Sports and Games

The college is facilitated with a 25 acre sports village with 400 meter track along with the drainage system. The College also provides facilities to maintain physical fitness of students by establishing gymnasiums in the sports village and in their respective hostels. The following table provides the details of various sports and games available for students.

S.No	Name of the Sports and games
1	Hockey
2	Football
3	Volleyball
4	Basket Ball
5	Badminton
6	Ball Badminton
7	Kho-Kho
8	Cricket
9	Chess
10	Athletics
11	Throw Ball
12	Yoga
13	Hurdles
14	Tennis
15	Fencing
16	Boxing
17	Weight lifting

Cultural Events

The college has organized various cultural events to bring out the talents of students. A pivotal role is played by Fine Arts Association to organize various like fine arts and cultural events. The women empowerment activities that pave way for enormous talents of students to be exhibited. The lists of cultural events are given in the following table.

S.No	Cultural Events
1	Dance
2	War of dance
3	Dance floor
4	Western & Carnatic Dance
5	Nadanasrishti
6	Solo dance
7	Insync Group Dance
8	Free style dance
9	Adapt tune
10	Video choreography
11	Tamil & English essay writing
12	Speech contest

13	Just a minute
14	Stage breakers
15	Tamil elocution
16	Tamil Turncoat
17	Turn Coat English

Cultural events are organized in an air-conditioned auditorium named Pavendhar Bharathidhasan Arangam which has the capacity to accommodate 600 students with the latest audio-visual systems. Besides, major cultural events are organized in the Open air theatre which has a seating capacity of 5000.

Fine Arts Association conducts Rangoli, Mehendi, Cartooning, Painting, Art from waste, Dance, Orchestra, Elocution, Dumb Charade, Cartoon drawing, Recitation, Verse writing and skit competitions to bring out the talents of students. Fine Arts Association also invites guests from the world of music, art, theatre etc.

Extra-Curricular

National Service Scheme Unit

NSS Unit I & II provides opportunities to students to work on different projects which include social work, literacy, relief work and basic education.

A green environment atmosphere is created by NSS volunteers by planting tree saplings every year in and around the college campus. Hundred students been enrolled as volunteers in each unit. The NSS Units also conduct AIDS Awareness programs, Personality Development programs and Sapling festivals etc.

The NSS units have also organized special camps in nearby villages. The significance of the special camp is to create awareness about importance of technical education, pollution free environment, fire accident and its safety measures, the effects of tobacco etc.

Red Ribbon Club

The RRC aims at harnessing the potential of the youth by equipping with appropriate information on HIV/AIDS prevention, care, support and treatment. It also aims to build the capacity as peer educators to spread the message among the youth on HIV/AIDS, positive health behavior. Blood donation camps are organized by the student volunteers in the college to succor the needy

Youth Red Cross

The YRC student volunteers have made a significant contribution in meeting the needs of the most vulnerable people in the society through YRC programmes. The Youth Red Cross unit of the college organizes activities that cultivate a humanitarian spirit and conducts training on safety, primary health care and healthy living.

Women Empowerment cell

Women Empowerment cell is to enhance understanding of issues related to girl students. With a view to taking up women's issues and problems, the cell aims at creating awareness of their rights and duties. It also provides a platform for women to share their experiences and views regarding their status in the society and to suggest ways to improve and empower themselves.

Teaching Learning Process

The College plans the teaching, learning and evaluation schedules before the commencement of each semester. Academic activities are scheduled and Academic Calendars are prepared well-in-advance by Dean-Academics in consultation with the Heads of the Department and the Controller of Examinations.

Course coordinators and course teachers prepare Instructional System Design (ISD) material for each theory and laboratory course, which outlines the syllabus coverage, instructional strategies to be used, and methods of evaluation and assessment of attainment of outcomes.

Curricula and syllabus for each of the programmes are approved by Anna University
<https://sethu.ac.in/regulation/>

Academic Calendar of the College:

<https://sethu.ac.in/category/academic-calendar/>

Academic Time Table with the name of the Faculty members handling the Course

The Academic time table is prepared in consultation with Dean-Academics and faculty representatives from each department. The timetable is circulated to the faculty members and displayed in the department and class-room notice boards.

Teaching Load of each Faculty

The plan for teaching begins at the departmental level with the subject allocation meeting. The courses are allotted to the faculty based on their competence and interest. The faculty members prepare the teaching plan which contains the topic-wise coverage details including the mode of delivery. The HoD monitors and approves the teaching plan.

Internal Continuous Evaluation System and place

Internal Assessment Tests are conducted as scheduled and the progress of the students is constantly monitored. The students are counselled and motivated based on their performance. For all theory courses the continuous internal assessment consists of three tests, seminar/ assignment and marks for attendance. Bloom's Taxonomy is followed in setting the question papers to evaluate the students at different cognitive levels

Student's assessment of Faculty, System in place

The College has a mechanism for evaluation of teachers. A formal End-semester feedback is collected from the students for each course at the end of the semester. The end-semester feedback helps to appraise a faculty on various parameters and helps to determine the degree of enhancement required for various parameters. The feedback helps in the assessment of faculty strengths and weaknesses and improves the quality of teaching-learning process. An informal mid-semester feedback is collected from the students in the middle of each semester for each course. It helps to assess the coverage of syllabus and identify the difficulties in learning.

For each Post Graduate Courses give the following:

Title of the Course

- ❖ M.E. CAD/CAM
- ❖ M.E. Communication Systems
- ❖ M.E. Computer Science & Engg.
- ❖ M.E. Power Electronics & Drives
- ❖ M.E. Structural Engg.

Laboratory facilities exclusive to the Post Graduate Course

Well equipped laboratories are exclusively available for PG courses

Special Purpose

Software, all design tools in case

17. List of Research Projects/ Consultancy Works

Number of Projects carried out, funding agency, Grant received

Dr.A.Srinivasan, Principal Investigator and Mr.B.Meenakshisundaram, Co-Principal Investigator, Department of Electrical and Electronics Engineering has obtained a grant of Rs.40.29 lakhs, from the Department of Science and Technology for the project titled "Recognition and Characterization of Solar cell defects using combined Thermal Image camera and Reconfiguration scheme.

Dr.S.Karthick Kumar, Department of Physics has obtained a grant of Rs.27.34 lakhs from the Department of Science and Technology, New Delhi for the Project titled "Investigation of Graphene modified Metal Oxide thin films for Solar Selective Absorbers".

Our College has obtained a grant of Rs.60 lakhs from the DST-FIST, New Delhi for the Project titled "Funds to Improvement of Science & Technology Infrastructure".

On Going Research Projects:

Sl. No.	Name of faculty	Title of the Project	Fund Details	
1	Dr. A. Senthil Kumar Dr. G.D. Sivakumar Dr. A. Merline	Fund for Improvement of S&T Infrastructure	Amount Sanctioned	60.00 Lakhs
			Sponsored By	DST - FIST
			Duration	5 years
2	Dr. R. Tamilselvi Dr. M. Parisa Beham Dr. A. Merline	Non Invasive Fetal Stress Monitoring Device	Amount Sanctioned	21.47 Lakhs
			Sponsored By	DST - SEED
			Duration	3 Years
3	Dr. R. Tamilselvi Dr. M. Parisa Beham	Non Invasive Fetal Stress Monitoring Device-WEECARE	Amount Sanctioned	2 Lakhs
			Sponsored By	Entrepreneurship Development and innovation institute
			Duration	1 Year
4	Dr.R.Tamilselvi Dr.M.Parisa Beham Mrs.T.Ruba	Accurate Classification and Detection of Brain Cancer Cells in MRI And CT Images Using Nanocontrast Agents	Amount Sanctioned	0.40 Lakhs
			Sponsored By	Institution of Engineers (India)
			Duration	2 Years
5	Dr.V.Vignesh Dr.B.Mohamed Rabi	Experimental Investigation on Mosambi peel powder Poly vinyl alcohol composites film for eco friendly Packaging applications	Amount Sanctioned	2.4 Lakhs
			Sponsored By	Tamil Nadu State Council for Science and Technology
			Duration	2 Years

Publications (if any) out of research in last three years out of masters projects

<https://scholar.google.co.in/citations?user=KZFqaXoAAAAJ&hl=en>

Industry Linkage

MoUs with Industries (minimum 3)

- ❖ M/s TVS Infotech
- ❖ M/s Sun Pressing Pvt Ltd.
- ❖ M/s Suresoft Pvt Ltd.
- ❖ M/s Hi-Tech Arai Pvt Ltd.
- ❖ M/s Infosys Technologies LTD.
- ❖ M/s IBM India Pvt Ltd.
- ❖ M/s Aruna Alloy Steels Pvt Ltd..
- ❖ M/s FLSMIDTH Pvt Ltd.
- ❖ M/s Tata Consultancy Services
- ❖ M/s IMAQ Technologies
- ❖ M/s Strategic Engineering Pvt Ltd.

18. LoA and subsequent EoA till the current Academic Year :

https://drive.google.com/file/d/1O6bM8ZCdVaq0d_r5KyISCKmkrg313Bm6/view?usp=sharing

19. Accounted audited statement for the last three years

<https://sethu.ac.in/finance-3/>