

## MANDATORY DISCLOSURE

### **1. Name of the Institution**

Name of the Institution	<b>SETHU INSTITUTE OF TECHNOLOGY</b>
Address of the Institution	<b>Pulloor, Kariapatti</b>
City & Pin Code	<b>Virudhunagar Dt. Pincode - 626115</b>
State / UT	<b>Tamilnadu</b>
Phone number with STD code	<b>04566-229700</b>
FAX number with STD code	<b>04566-308000</b>
Email	<b>sit@sethu.ac.in</b>
Website	<b>www.sethu.ac.in</b>
Nearest Railway Station(dist in Km)	<b>25 KM</b>
Nearest Airport (dist in Km)	<b>12 KM</b>
Type of Institution	<b>Private-Self Financed</b>
Category (1) of the Institution	<b>Non Minority</b>
Category (2) of the Institution	<b>Co-Ed</b>

### **2. Name and address of the Trust/ Society/ Company and the Trustees**

Name of the organization running the Institution	<b>SETHU EDUCATIONAL TRUST</b>
Type of the organization	<b>Trust</b>
Address of the organization	<b>No. 477, 10th East Cross Street Anna nagar, Madurai. Pincode – 625020</b>
Registered with	<b>Under Indian Trust Act of 1882</b>
Registration date	<b>28.12.1994</b>
Phone number with STD code	<b>0452-2532215</b>
FAX number with STD code	<b>0452-2538126</b>

### **3. Name and Address of the Vice Chancellor/ Principal/ Director**

Name of Principal / Director	<b>Dr.A.SENTHIL KUMAR</b>
Exact Designation	<b>PRINCIPAL</b>
Phone number with STD code	<b>04566 – 229705</b>
FAX number with STD code	<b>04566 – 308000</b>
Email	<b>principal@sethu.ac.in</b>
Highest Degree	<b>Ph.D.</b>

### **4. Name of the affiliating University**

Name of the affiliating University	<b>Anna University, Chennai</b>
Address	<b>Guindy, Chennai.</b>
Website	<b>www.annauniv.edu</b>
Latest affiliation period	<b>2020 - 2021</b>

## **5. Governance**

### **Governing Board Members \***

<b>Sl. No.</b>	<b>Name</b>	<b>Position</b>
1	Mr. S. Mohamed Jaleel	Chairman
2	Mr. S M. Seeni Mohaideen	Trust Member
3	Mr. S.M. Seeni Mohamed Aliar Maraikkayar	Trust Member
4	Ms. S.M. Nilofer Fathima	Trust Member
5	Ms. S.M. Nazia Fathima	Trust Member
6	Dr. H. Devaraj	Member (Educationist)
7	Mr. K. Ganesan,	Member (Educationist)
8	Dr. S. Muthu	Member (Educationalist)
9	Mr. B.T. Bangera	Member (Industrialist)
10	Mr. A.K. Pattabiraman	Member (Industrialist)
11	Ms. E. Esai Arasi	Member (DOTE Nominee)
12	Dr. K. Subramanian	Member (UGC Nominee)
13	Dr. B. Umamaheswari	Member (University Nominee)
13	Dr. A. Merline	Member (Faculty)
14	Dr. G.D. Sivakumar	Member (Faculty)
15	Dr. A. Senthil Kumar	Member Secretary

### Members of Academic Advisory Body

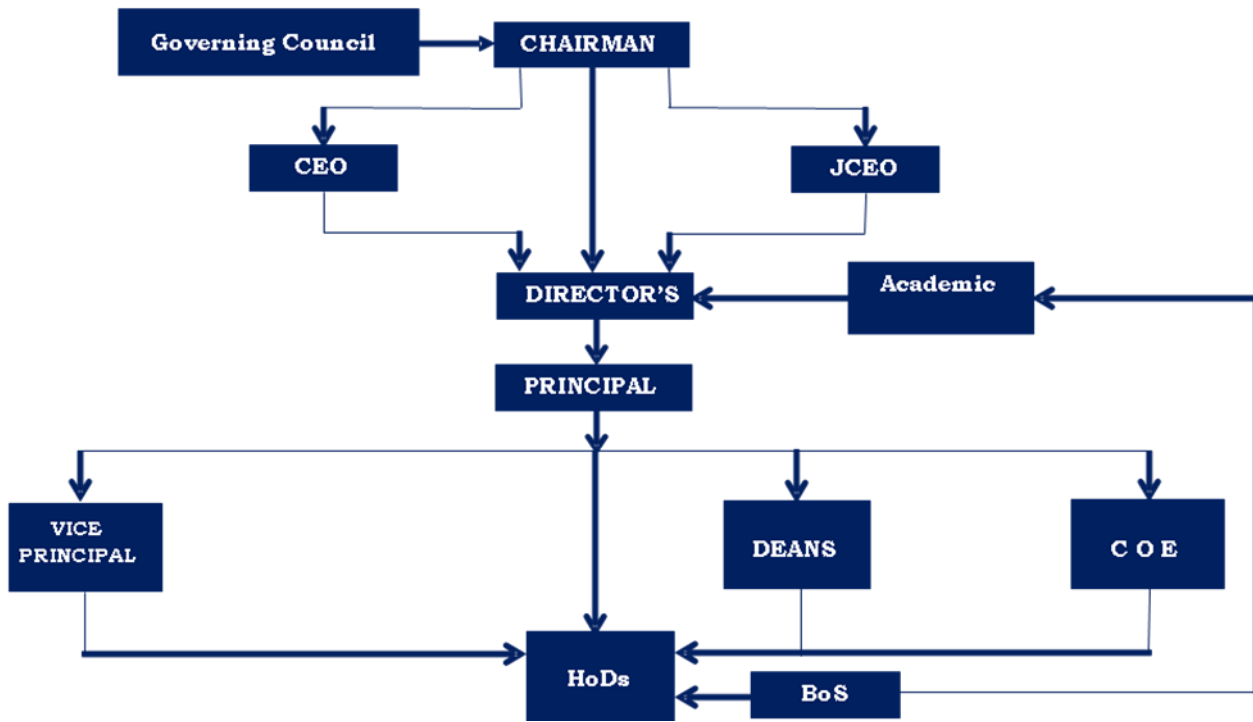
<b>SI No.</b>	<b>Name of the Member</b>	<b>Position</b>
1	Dr. A. Senthil Kumar Principal	Chairman
2	Dr. R. Baskaran Professor, Dept.of Industrial Engg. CEG Campus, Anna University, Chennai – 600 025	Member (University Nominee)
3	Dr. P. Vimala Professor, Dept.of Mathematics., CEG Campus, Anna University, Chennai – 600 025	Member (University Nominee)
4	Dr. Ranjani Parthasarathy Professor, Dept.of Information Science & Tech. CEG Campus, Anna University, Chennai – 600 025	Member (University Nominee)
5	Dr. S. Muthu, Formerly Special Officer, DOTE.	Member ( External Expert)
6	Dr. M.S. Palanisamy Former VC Tamilnadu Open University	Member ( External Expert)
7	Mr. B.T. Bangera Managing Director, Hi-Tech Arai Pvt.Ltd., Madurai	Member ( External Expert)
8	Dr. M. Jayachandran Formerly Chief Scientist & Head Electrochemical Materials Science Division CECRI, Karaikudi	Member (External Expert)
9	Ms. S.M. Nazia Fathima Director R & D	Member
10	Dr. A. Merline Prof. & Dean (Planning & Development)	Member
11	Dr. K. Hemalatha Prof. & Dean (Academics)	Member
12	Dr. G.D. Sivakumar Vice Principal	Member
13	Dr. R. Muralikannan Controller of Examinations	Member
14	Dr. C. Callins Christiyana Prof. & Dean (DRC)	Member
15	Dr. C. Muthusamy HoD, MECH	Member
16	Dr. N. Balaji HoD, CSE	Member
17	Dr. M. Parisa Beham HoD, ECE	Member

<b>SI No.</b>	<b>Name of the Member</b>	<b>Position</b>
18	Dr. A. Srinivasan HoD, EEE	Member
19	Dr. S. Sivaranjani HoD, IT	Member
20	Dr. B. Jeyaprabha HoD, Civil	Member
21	Dr. S. Sabarunisha Begum HoD, Chemical Engg.	Member
22	Dr. R. Arangasamy HoD, Biomedical	Member
23	Dr. V. Dharmaraj, HoD, Agriculture Engg.	Member
24	Dr. R. Aghila HoD, Computer Science and Business System	Member
25	Dr. D. Lakshmanaraj HoD, Maths	Member
26	Dr. V. Revathi HoD, Physics	Member
27	Dr. L. Jayalakshmi HoD, Chemistry	Member
28	Dr. S. Ramesh HoD, English	Member
29	Dr. R. Tamilselvi, PG Head, ME – Comm. Systems	Member
30	Dr. M. Malathi, PG Head, ME – CSE	Member
31	Dr. B. Meenakshi Sundaram PG Head, ME - PED	Member
32	Dr. B. Soundaradevi Assoc. Professor, EEE	Member ( Faculty)
33	Dr. D. Rojaramani Assoc. Professor, IT	Member ( Faculty)

### **Frequency of the Board Meeting and Academic Advisory Body**

Academic Advisory Body and Board of Studies meeting are conducted as per the guidelines of UGC and AICTE.

## Organizational chart and processes



## **Nature and Extent of involvement of Faculty and students in academic affairs/improvements**

### **Responsibility of other Teaching Faculty:**

- Other teaching faculty includes Professors, Associate Professors and Assistant Professors
- Facilitating design of Curriculum and syllabi, teaching, learning and evaluation process.
- Maintaining records to comply with the statutory requirements like students' attendance, internal assessment etc.
- Taking assignments like class advisor, proctor and in other co-curricular and extra-curricular activities.
- Maintaining discipline and decorum in the campus on their part and on the part of the students.
- Engaging in Research and Development work, participating in short term refresher courses, seminars, conferences and publishing papers in Journals.

**As per AICTE Pay Commission [1997] Recommendations, The Job Responsibilities of Faculty consists of 4 components viz.,**

**Academic (ii) Research & Consultancy (iii) Administration Extension Services**

### **Authority of other Teaching faculty:**

- To conduct the class and guide and counsel the students under his/her custody.
- To take decisions and execute the same within the ambit of his/her responsibilities.
- To co-ordinate the work of supporting staff.
- To assume responsibility in the absence of the HoD.

### **Academic Performance of students and Mentoring**

The academic performance of students is monitored continuously throughout the course of their study. From first semester onwards, students are under academic mentoring by proctors and class advisors. The proctors and the class advisors meet the students during the lunch break. They patiently counsel and get the feedback on their progress in academics.

The progress of the students in academics is closely observed by them and whenever counseling is required they extend moral support to rectify the problems then and there. If any problem with a student could not be solved, they bring this to the knowledge of the Head of the department for remedial action.

The college earnestly provides personal enhancement and development schemes for students. The focus for personal enhancement and development invariably begins from the first semester and it is carried on until the final semester.

### **Soft Skill Development**

The college has a dedicated team of faculty members to impart exclusive training to the students in Soft skills and personality development. The Training and Placement Cell brings in soft skill trainers and eminent resource persons from various industries for personal enhancement and development. The soft skill training is provided from the first year onwards to enhance the personal development of students.

### **Communication skill development**

The college takes the initiative for enhancement of proficiency in English Language skills from first year onwards. Gradual development of such skills may happen only when the training begins from the first semester. Students of the college are also given a platform to enhance aptitude and verbal skills continuously.

## Career guidance

The college offers career guidance for further studies, employment opportunities in government as well as private sectors and also in the field of entrepreneurship. Offering such valuable guidance to the students at the right time makes a great impact in the choice of their career as well as in the progress towards the chosen career. Exposure is given to students on avenues open to students in foreign universities, scholarships and immigration through the Career Guidance Cell which is a part of Placement cell. Students are motivated to participate in competitive exams like, TNPSC, UPSC, Defense services, MONET, GRE, CAT, MAT, GATE, IELTS, TOEFL etc. through Career Guidance Cell.

## Value added courses

For enhancing the prospects of higher education and employment for the students in the current global scenario value added courses are essential. Various value added courses like EMC<sup>2</sup>, ANSYS, Labview etc., are given to the students by the departments.

## Personal Enhancement and Development through Department Association

The Department Association regularly organizes technical symposiums, National and International seminars, national and international conferences, workshops, guest lectures and an assortment of competitions. The students are encouraged to organize various events through various committees of the Associations and it improves organizing skills and personality development.

The college regularly invites the alumni as resource persons and conducts Guest lecturers to kindle the student's knowledge by their senior friends to fulfill the expectation of the industries.

The college offers various student centered activities like sports and games, cultural and extracurricular activities. A wide range of opportunities are available for the students through Inter-departmental and inter-collegiate competitions to bring out their potential talents.

## Sports and Games

The college is facilitated with a 25 acre sports village with 400 meter track along with the drainage system. The College also provides facilities to maintain physical fitness of students by establishing gymnasiums in the sports village and in their respective hostels. The following table provides the details of various sports and games available for students.

S.No	Name of the Sports and games
1	Hockey
2	Football
3	Volleyball
4	Basket Ball
5	Badminton
6	Ball Badminton
7	Kho-Kho
8	Cricket
9	Chess
10	Athletics
11	Throw Ball
12	Yoga
13	Hurdles

S.No	Name of the Sports and games
14	Tennis
15	Fencing
16	Boxing
17	Weight lifting

### Cultural Events

The college has organized various cultural events to bring out the talents of students. A pivotal role is played by Fine Arts Association to organize various like fine arts and cultural events. The women empowerment activities that pave way for enormous talents of students to be exhibited. The lists of cultural events are given in the following table.

S.No	Cultural Events
1	Dance
2	War of dance
3	Dance floor
4	Western & Carnatic Dance
5	Nadanasrishti
6	Solo dance
7	Insync Group Dance
8	Free style dance
9	Adapt tune
10	Video choreography
11	Tamil & English essay writing
12	Speech contest
13	Just a minute
14	Stage breakers
15	Tamil elocution
16	Tamil Turncoat
17	Turn Coat English

Cultural events are organized in an air-conditioned auditorium named Pavendhar Bharathidhasan Arangam which has the capacity to accommodate 600 students with the latest audio-visual systems. Besides, major cultural events are organized in the Open air theatre which has a seating capacity of 5000.

Fine Arts Association conducts Rangoli, Mehendi, Cartooning, Painting, Art from waste, Dance, Orchestra, Elocution, Dumb Charade, Cartoon drawing, Recitation, Verse writing and skit competitions to bring out the talents of students. Fine Arts Association also invites guests from the world of music, art, theatre etc.



## **Extra Curricular**

### **National Service Scheme Unit**

NSS Unit I & II provides opportunities to students to work on different projects which include social work, literacy, relief work and basic education.

A green environment atmosphere is created by NSS volunteers by planting tree saplings every year in and around the college campus. Hundred students been enrolled as volunteers in each unit. The NSS Units also conduct AIDS Awareness programs, Personality Development programs and Sapling festivals etc.

The NSS units have also organized special camps in nearby villages. The significance of the special camp is to create awareness about importance of technical education, pollution free environment, fire accident and its safety measures, the effects of tobacco etc.

### **Red Ribbon Club**

The RRC aims at harnessing the potential of the youth by equipping with appropriate information on HIV/AIDS prevention, care, support and treatment. It also aims to build the capacity as peer educators to spread the message among the youth on HIV/AIDS, positive health behavior. Blood donation camps are organized by the student volunteers in the college to succor the needy

### **Youth Red Cross**

The YRC student volunteers have made a significant contribution in meeting the needs of the most vulnerable people in the society through YRC programmes. The Youth Red Cross unit of the college organizes activities that cultivate a humanitarian spirit and conducts training on safety, primary health care and healthy living.

### **Women Empowerment cell**

Women Empowerment cell is to enhance understanding of issues related to girl students. With a view to taking up women's issues and problems, the cell aims at creating awareness of their rights and duties. It also provides a platform for women to share their experiences and views regarding their status in the society and to suggest ways to improve and empower themselves.

## **Mechanism/ Norms and Procedure for Democratic/ Good Governance**

**Democratic/ Good Governance System** is the practice of empowering employees to participate in organizational decision making. DGS is to promote genuine involvement in the enunciation of vision, policies and goals of the institution in the decision making process and in the administration of the college. DGS acts as a force to motivate employees to meet specific organizational goals. Motivated employees are the biggest assets of an organization and participative management is an effective strategy to retain the best talents of the college.

The following are the objectives of DGS:

- To introduce participative style of management in the college
- To introduce decentralization and delegation of powers
- To facilitate the decision making related to academic and administrative activities through open and honest discussions
- To maintain a proper flow of communication
- To meet the psychological needs of employees

### **The Context:**

The vision of the college is to promote excellence in technical education and scientific research for the benefit of the society. The Management has shared the vision with the staff members making them

aware of the implications of the vision and mission. To make the process more effective, the management decided to involve all the stake holders in the process of decision making at various levels.

As the College grew in size, number and courses, the challenges also grew in academic administration, finance management, resource planning and sharing and the like. Another challenge which the college had to handle was communication between and within the college, departments and admin-office. The college opted for PMS to redistribute authority, responsibility, financial resource and infrastructure among the different levels of organizational setup.

### **The Practice**

The college follows Participatory Management Systems in all its decision making process. The participative management approach is practised at different levels in the college and all the stakeholders are involved in the process of decision-making based on collective wisdom. The stakeholders participate in the following fora and contribute to the decision making.

#### **Democratic/ good Governance System for academic and administrative activities**

- Governing Council
- HoDs Meeting
- Department Faculty Meeting (DFM)
- Class Committee Meeting (CCM)

#### **Democratic/ good Governance System for curriculum designing**

- Academic Council
- Board of Studies (BOS)
- Curriculum Planning and Evaluation Committee (CPEC)
- Department Advisory Board (DAB) Meeting
- Program Assessment Committee (PAC)

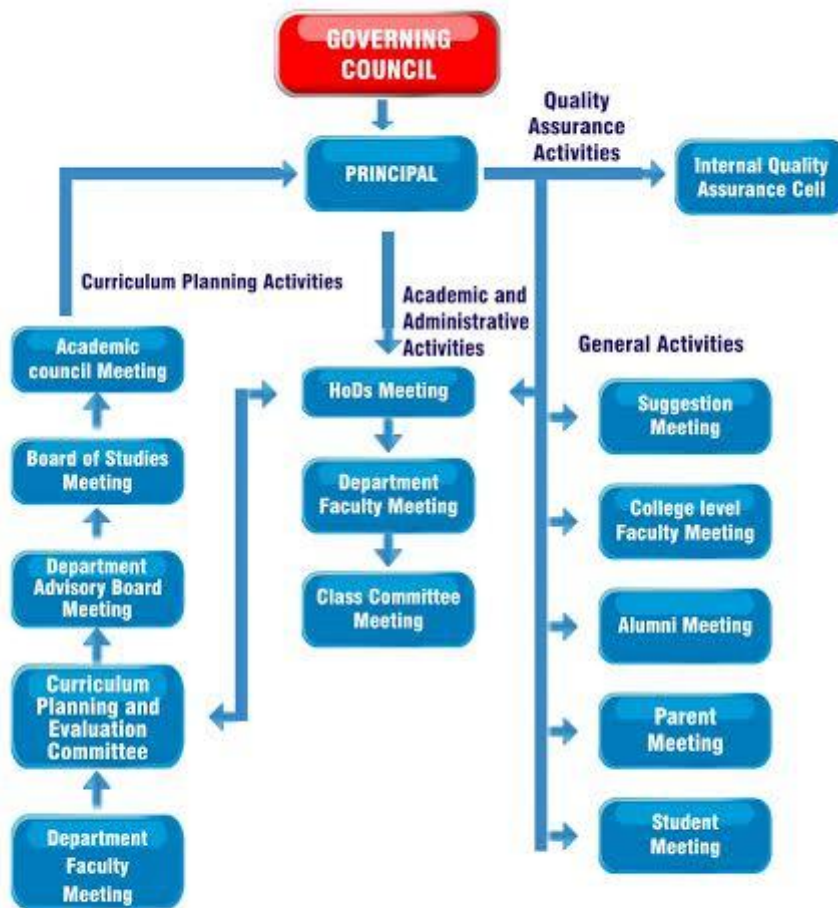
#### **Democratic/ good Governance System for Quality Assurance**

- Internal Quality Assurance Cell

#### **Democratic/ good Governance System for general activities**

- Suggestion Committee Meeting
- College Faculty Meeting
- Alumni Meeting
- Parents Meeting
- Students Meeting

## **DEMOCRATIC/ GOOD GOVERNANCE SYSTEM**



**Fig. Democratic/ good Governance System**

### **Democratic/ good Governance System for academic and administrative activities**

#### **Governing Council**

The college has a Governing Council and all the policy decisions of the College are taken, based on the guidance of the Governing Council. In the Governing council, faculty members are also participating in decision making in addition to the eminent members from industry, academia and regulatory bodies.

#### **HoDs Meeting**

HoDs meeting is the executive council to take decisions in academic, research and industry institute interaction initiatives, etc. The members who participate in HoDs meeting are Principal, Vice Principal, Deans, HoDs, Professors and functional heads like COE, Librarian, Placement Officer, etc. All decisions are taken, after detailed discussions and implemented meticulously after arriving at a consensus decision.

#### **Department Faculty Meeting (DFM)**

Department Faculty Meeting is convened by the HoD and important decisions discussed in the HoDs meeting are conveyed for implementation.

Faculty members provide their suggestion in all department level activities like academic excellence, R&D, Industry Institute Interaction, organizing seminars, academic progress of the students, performance of the students in the Periodical Tests and the corrective measures for the slow learners etc.

### **Class Committee Meeting (CCM)**

The teaching learning process is continuously reviewed through various activities at different stages. At the initial level, the teaching learning process is reviewed in the class committee meetings consisting of course instructors of the class concerned, student representatives and a chairperson who is not teaching the class. The committee reviews the syllabus coverage and it tries to solve the problems experienced by students in the class room and in the laboratories.

### **Democratic/ good Governance System for curriculum designing**

#### **Academic Council Meeting**

- Without prejudice to the generality of functions mentioned, the academic council will have powers to:
- Scrutinize and approve the proposals with or without modification of BOS with regard to courses of study, academic regulations, curriculum, syllabi and modifications thereof, instructional and evaluation arrangements, methods, procedures relevant thereto etc., provided that where the academic council differs on any proposal, it will have the right to return the matter for reconsideration to the BOS concerned or reject it, after giving reasons to do so.
- Make regulations regarding the admission of students to different programmes of study in the college
- Make regulations for sports, extra-curricular activities, and proper maintenance and functioning of the play grounds and hostels

#### **Board of Studies (BOS) Meeting**

The BOS of a department in the college shall :

- Prepare syllabi and various courses keeping in view the objectives of the college, interest of the stakeholders and national requirement for consideration and approval of the academic council
- Suggest methodologies for innovative teaching and evaluation techniques
- Suggest panel of names to the academic council for appointment of examiners
- Co-ordinate research, teaching, extension and other academic activities in the department / college
- The Principal of the college shall draw the schedule for meeting of the BOS for different departments. The meeting may be scheduled as and when necessary, but atleast once a year.

#### **Department Advisory Board (DAB) Meeting**

The Department Advisory Board consists of external experts like academicians, industrialists and all the faculty members. All important decisions related to the development of the Department are taken in this forum.

In Department Advisory Board (DAB) meeting, activities related to department development, research, curriculum planning & upgradation, industrial needs, etc., are discussed and decisions are made accordingly

#### **Curriculum Planning and Evaluation Committee (CPEC) Meeting**

The CPEC is constituted to discuss and decide all issues related to curriculum design and the different components of the curriculum process.

This vibrant body has members drawn from all departments. These members are middle level faculty members of the Departments.

#### **Program Assessment Committee (PAC)**

Every program has a Program Assessment Committee (PAC), which is a core committee of the program. It is responsible for the design and development of the draft curriculum. The Chair Person of the committee is

the Head of the Department, and the members are faculty members and student representatives of the program.

### **Democratic/ good Governance System for Quality Assurance**

#### **Internal Quality Assurance Cell**

IQAC is formulated according to the guidelines of NAAC in the year 2014-15. The Internal Quality Assurance Cell (IQAC) where all decisions related to quality assurance are taken has representation of students and alumni in addition to the Heads of the Departments.

#### **The functions of IQAC are:**

- Developing quality benchmarks of the college through strategic planning to achieve the vision of the college.
- Monitoring the attainment of performance targets (PEOs and POs) of the programmes that are set by the respective Department Advisory Boards
- Dissemination of information on the various quality parameters of higher education
- Coordinating the quality assurance related activities such as:
- Quality Management System audit (External and Internal)
- Preparation of SAR and SSR for accreditation by NBA and NAAC
- Academic audit by the Academic Audit cell

### **Democratic/ good Governance System for general activities**

#### **Suggestion Committee Meeting**

A suggestion committee meeting is conducted by the Principal every month with student representatives from all the departments, where the suggestions received through the suggestion boxes are reviewed and corrective actions are taken.

The faculty members can post their suggestions in the separate suggestion box kept for them in the college office. They are also reviewed and corrective actions are taken.

#### **College Faculty Meeting**

The suggestions regarding academic, infrastructure development, research & development, etc., are discussed in the college faculty meetings.

They are discussed and accordingly decisions are taken by the Management and the Principal.

#### **Alumni Meeting**

Alumni are important, as they are a measure of the long-term success of the programme.

Experience of the alumni provides inputs to the students for their career advancements.

The suggestions given by the Alumni Members are collected through feedbacks and are incorporated in the curriculum development and infrastructural development. Alumni feedback helps in curriculum designing and enriches the programme with the latest trends in technology.

Innovative ideas are planned and follow up actions are taken on need basis.

#### **Parents Meeting**

Parents meetings are conducted every semester to get feedback from the parents.

The suggestions of the Parents, regarding academic performance, placement, infrastructure facilities, etc., are discussed in the Parent Teachers meetings. The issues are directly taken care of by the Principal and the Management.

The grievances are well received and remedial actions are taken.

## **Students Meeting**

The issues of the students are addressed in the class committee meetings. Two class committee meetings are conducted every semester as per the guidelines of Anna University.

- Apart from that, the students can access the Head of the Department, Principal and the Management at any time to solve their grievances.
- Proctor system is functioning effectively in the college to ensure / monitor the student's performance.
- Students inputs help to modify contents of the syllabi and introduction of new value added courses
- Feedback of the students helps to modify the teaching and learning methodologies. Feedbacks are collected from the students periodically about the Course and Course Instructors.

## **Student Feedback on Institutional Governance/ Faculty performance**

Students and staff are welcome to give their suggestion in a suggestion form. Suggestion boxes are kept in the central location in the college and hostel. Suggestion slips are kept near the suggestion box in a form holder fixed to the wall.

A suggestion committee has been constituted with two faculty members, the Principal and Student Representatives.

The suggestion box is opened every month by the student representative in the presence of a committee member. All the suggestions are serially numbered and entered in a register.

The suggestion committee will meet every month to analyze and evaluate the suggestion. The committee will suggest necessary action on the suggestions and record the same in the suggestion slip and will forward them to the Principal. The Principal will initiate action. If any action is beyond the authority of the Principal, then it is sent to the Chairman for his advice.

Actions taken on the suggestions are informed to the staff/students through the notice board and the records are maintained by Principal

## **Evaluation of staff by students**

Students are given an opportunity to evaluate the staff with regard to teaching traits, attitude of staff, syllabus and course coverage. This is obtained at the end of each semester and necessary corrective actions are initiated by the Principal.

All the students will be allowed to evaluate their faculty members in a prescribed form on a grade scale ranging from 1 to 5.

The feedback from the students will be analyzed by HoD and necessary corrective action in consultation with Principal will be initiated. This feedback is strictly used only for improving the quality of the system and not for any kind of victimization.

## **Grievance Redressal Mechanism for faculty, staff and students**

### **Grievance Redressal System:**

The suggestion box is placed at the Administrative Office, so that the staff can post any suggestion or grievance or complaint. Staff Suggestion Box is opened once in three months and the matters represented by the staff is analysed and the necessary remedial measure is taken wherever the representation is genuine. The suggestions are also received from the faculty meeting.

### **GRIEVANCE REDRESSAL CELL**

Dr.G.Soundra Devi, Professor / EEE - Overall Convener

### **GRIEVANCE REDRESSAL CELL FOR BOYS STUDENTS**

Dr.T.Guru Baskar, Professor / GE - Convener

Dr.M.Sivabharathy, Professor / Physics - Member

Mr.S.Paramasamy, Assoc. Prof. / Mech - Member

### **GRIEVANCE REDRESSAL CELL FOR GIRL STUDENTS**

Dr.G.Soundra Devi, Professor / EEE - Convener

Ms.G.Vairasuganthi, Asst.Prof./CSE - Member

Ms.P.Deepa, Asst.Prof./ECE - Member

Dr.D.Roja Ramani, Assoc. Prof. / IT - Member

### **GRIEVANCE REDRESSAL CELL FOR LADY STAFF**

Dr.M.Parisha Beham, HoD / ECE - Convener

Dr.S.Sabarunisha Begam, HoD / Chemical - Member

Dr.A.R.Rajeswari, Assoc. Prof. / CSE - Member

## **Establishment of Anti Ragging Committee**

### **Anti Ragging Committee**

<b>S.No.</b>	<b>Name of the Faculty</b>	<b>Designation</b>
1	Dr.A.Senthil Kumar	Principal - Convener
2	Dr.G.D.Sivakumar	Vice Principal - Co-convener
3	Dr.C.Callins Christiyana	HoD, CSE - Member
4	Dr.A.Srinivasan	HoD, EEE - Member
5	Dr.S.Gomathi	Professional Counsellor - Member
6	Dr.T.Guru Baskar	A.O - Member
7	Mr.L.A.Victor	Surabhi Trust – Member (NGO)

S.No.	Name of the Faculty	Designation
8	Ms.B.Uma Maheswari	Lecturer/SVN College - Member (Parent)
9	Mr.M.Thangapandian	Head Constable, Aviyur Police Station – Member (Police)
10	Mr.Jeyakumar	Dinamalar – Newspaper – Member
11	Selvi.K. Anu Dharani	I Year Bio-Medical - Member (student)
12	Selvan.M.Thirumalai Pandi	I Year Agri. - Member (student)
13	Selvan.M.Farmaan Sathak	I Year Civil - Member (student)

### **Anti Ragging Squad**

S.No.	Name of the Faculty	Designation
1	Dr. M.Sheik Dawood	Professor / ECE - Convenor
2	Dr. K.Sathish Kumar	Professor / CSE - Member
3	Mr.B.Muthupandian	Asst. Prof.(SG) / ECE - Member
4	Dr.S.Vijayarajan	Assoc. Prof. / EEE - Member
5	Mr.M.Krishnakumar	Asst. Prof.(SG) / Civil - Member
6	Mr.M.Arul Jayan	Asst. Prof.(SG) / Chemical - Member
7	Mr.R.Narayanasamy	Deputy Warden - Member

### **Establishment of Online Grievance Redressal Mechanism**

Online grievance redressal mechanism is functioning inside the campus

### **Establishment of Grievance Redressal Committee in the Institution and Appointment of OMBUDSMAN by the University**

### **Establishment of Internal Complaint Committee (ICC)**

#### **Internal Complaints Committee**

S.No.	Name of the Faculty	Designation
1	Dr.B.Jeyaprabha Professor & Head / Civil	Presiding Officer
2	Dr.M.Parvathy Professor /CSE	Member (Faculty)
3	Dr.K.Kanimozhi Professor / EEE	Member (Faculty)
4	Dr.J.Rahila Associate Professor / EEE	Member (Faculty)
5	Dr. M.Poomani @ Punitha Assistant Professor (SG) / CSE	Member (Faculty)



<b>S.No.</b>	<b>Name of the Faculty</b>	<b>Designation</b>
6	Ms.P.Deepa Assistant Professor (SG) / ECE	Member (Faculty)
7	Dr.S.Meenakumari, Managing Trustee, Thainadu Rural Development and Social Welfare Trust.	Member (NGO)
8	Ms.J.Anandha Valli, Eminent Lawyer, Madurai Bench of Madras High Court	Member
9	Ms.Sivasankari Lawyer, Madurai Bench of Madras High Court	Member

The committee will admit complaints from

- Female employees on harassment and discrimination in the workplace.
- Female students on harassment and discrimination in the classroom and in relation to academic activities by faculty and staff

### **Establishment of Committee for SC/ ST**

### **Internal Quality Assurance**

<b>S.No.</b>	<b>Name of the Member</b>	<b>Designation</b>	<b>Position</b>
1	Dr. A. Senthil Kumar	Principal	Chairperson
2	Dr. G.D. Sivakumar	Vice Principal	Management Representative
3	Dr.K.Hemalatha	Dean (Academics)	Faculty Members
4	Dr.R.MuraliKannan	Controller of Examinations	
5	Dr.C.Calins Christiyana	Dean (DRC)	
6	Dr.C.Muthusamy	HoD - MECH	
7	Dr.N.Balaji	HoD - CSE	
8	Dr.M. Parisa Beham	HOD – ECE	
9	Dr.A.Srinivasan	HoD - EEE	
10	Dr.S.Sivaranjani	HoD – IT	
11	Dr.B.Jeyaprabha	HoD - Civil	
12	Dr.S.Sabarunisha Begum	HoD - Chemical	
13	Dr.R.Arangasamy	HoD - BME	
14	Dr.V.Dharmaraj	HoD - AGRI	
15	Dr. R. Aghila	HoD - CSBS	

S.No.	Name of the Member	Designation	Position
16	Dr. M.Malathi	PG Head - CSE	Faculty Members
17	Dr. R.Tamilselvi	PG Head – Comm. Systems	
18	Dr.B.Meenakshi Sundaram	PG Head - PED	
19	Dr. D. Lakshmanaraj	HoD – MATHS	
20	Dr.V.Revathy	HoD – PHYSICS	
21	Dr.L.Jayalakshmi	HoD – CHEMISTRY	
22	Dr.S.Ramesh	HoD (i/c) – ENGLISH	
23	Dr.M.Parvathy	First Year Coordinator	
24	Mr.R.Raja Guru	Assoc. Prof. / CSE	
25	Mr.T.Harish Babu	Asst.Prof. / EEE	
26	Selvan.A.Sathish	Final Year, EEE	
27	Selvi.M.Mathuri	FinalYear, BME	
28	Selvan.B.Karthikeyan	Third Year, AGRI	
29	Selvan. S. Aashish Raj	Second Year, CSE	
30	Mr.S.J.Pradeep	Proprietor, Techno Fusion, Engineering Consultant & Contractor, Aruppukottai	Alumni Member
31	Ms.T. Rajathi	Techno Functional Business Analyst, Solartis Technology Pvt. Ltd. Madurai.	Alumni Member
32	Mr.G.Rajamurthy	Director, SingaiCoirs Cluster Pvt. Ltd., Singampunari, Sivagangai District	Employer/Industrialist
33	Dr.T.Guru Baskar	Dean - Administration	Senior Administrative Officer
34	Dr.A.Merline	Dean – Planning & Development	Coordinator

### Programmes

Name of Programmes approved by AICTE	:	<b>ENGINEERING &amp; TECHNOLOGY</b>
Name of Programmes Accredited by NBA	:	<b>B.E. Mechanical Engineering &amp; B.Tech. Information Technology</b>
Status of Accreditation of the Courses	:	<b>Accredited for Three Years</b>
Total number of Courses	:	<b>16</b>
No. of Courses for which applied for Accreditation	:	<b>03</b>
Status of Accreditation – Preliminary/ Applied for	:	<b>Applied for SAR and results awaited</b>

SAR and results awaited/ Applied for SAR and  
visits completed/ Results of the visits awaited/  
Rejected/ Approved for ..... Courses

Name : MECHANICAL ENGINEERING

Course : B.E.

Level : U.G.

	2019-20	2018-19	2017-18	2016-17
Number of Seats	240	240	240	240
Duration	4	4	4	4
Year wise Actual Admissions	219	195	240	240
Cut off marks/rank of admission during the last three years	Minimum 80.00 Maximum 177.25	Minimum 81.25 Maximum 174.25	Minimum 78.75 Maximum 183.00	Minimum 79.00 Maximum 177.00
Fee	MGT-85000 TNEA - 55000	MGT-85000 TNEA - 50000	MGT-70000 TNEA - 55000	MGT-70000 TNEA - 45000
Placement Facilities	Internal Training (Aptitude,Communication& soft skill, Technical(C,C++,Java)), External Training (Aptitude,Communication& soft skill, Technical(C,C++,Java)), ,Mock Interview, Online Assesment,Ebox,Company Specific Training ,Guest Lecture, Departmentwise Technical Training,Code vita and Enginex Contest Training.	Internal Training (Aptitude,Communication& soft skill, Technical(C,C++,Java)), External Training (Aptitude,Communication& soft skill, Technical(C,C++,Java)), ,Mock Interview, Online Assesment,Ebox,Company Specific Training ,Guest Lecture, Departmentwise Technical Training,Code vita and Enginex Contest Training.	Internal Training (Aptitude,Communication& soft skill, Technical(C,C++,Java)), External Training (Aptitude,Communication& soft skill, Technical(C,C++,Java)), ,Mock Interview, Online Assesment,Ebox,Company Specific Training ,Guest Lecture, Departmentwise Technical Training,Code vita and Enginex Contest Training.	Internal Training (Aptitude,Communication & soft skill, Technical(C,C++)), External Training (Aptitude,Communication & soft skill, Technical(C,C++)), ,Mock Interview, Online Assesment, Specific Training ,Guest Lecture, Departmentwise Technical Training,Code vita and Enginex Contest Training.
Campus placement in last three years with minimum salary, maximum salary and average salary	Minimum-72000 Maximum-500000	Minimum-102000 Maximum-450000	Minimum -96000 Maximum-480000	Minimum- 84000 Maximum-648000

Name : **COMPUTER SCIENCE ENGINEERING**

Course : **B.E.**

Level : **U.G.**

	<b>2019-20</b>	<b>2018-19</b>	<b>2017-18</b>	<b>2016-17</b>
Number of Seats	180	180	180	240
Duration	4	4	4	4
Year wise Actual Admissions	181	180	162	217
Cut off marks/rank of admission during the last three years	Minimum 79.00 Maximum 189.50	Minimum 97.75 Maximum 180.00	Minimum 124.75 Maximum 181.00	Minimum 84.25 Maximum 187.25
Fee	MGT-85000 TNEA - 50000	MGT-85000 TNEA - 50000	MGT-70000 TNEA - 55000	MGT-70000 TNEA - 45000
Placement Facilities	Internal Training (Aptitude,Communication& soft skill, Technical(C,C++,Java)), External Training (Aptitude,Communication& soft skill, Technical(C,C++,Java)), ,Mock Interview, Online Assesment,Ebox,Company Specific Training ,Guest Lecture, Departmentwise Technical Training,Code vita and Enginex Contest Training.	Internal Training (Aptitude,Communication& soft skill, Technical(C,C++,Java)), External Training (Aptitude,Communication& soft skill, Technical(C,C++,Java)), ,Mock Interview, Online Assesment,Ebox,Company Specific Training ,Guest Lecture, Departmentwise Technical Training,Code vita and Enginex Contest Training.	Internal Training (Aptitude,Communication& soft skill, Technical(C,C++,Java)), External Training (Aptitude,Communication& soft skill, Technical(C,C++,Java)), ,Mock Interview, Online Assesment,Ebox,Company Specific Training ,Guest Lecture, Departmentwise Technical Training,Code vita and Enginex Contest Training.	Internal Training (Aptitude,Communication & soft skill, Technical(C,C++)), External Training (Aptitude,Communication & soft skill, Technical(C,C++)), ,Mock Interview, Online Assesment, Specific Training ,Guest Lecture, Departmentwise Technical Training,Code vita and Enginex Contest Training.
Campus placement in last three years with minimum salary, maximum salary and average salary	Minimum-72000 Maximum-500000	Minimum -79388 Maximum-513600	Minimum -85300 Maximum-550000	Minimum -72000 Maximum-650007

Name : **ELECTRONICS & COMMUNICATION ENGINEERING**

Course : **B.E.**

Level : **U.G**

	<b>2019-20</b>	<b>2018-19</b>	<b>2017-18</b>	<b>2016-17</b>
Number of Seats	180	180	180	240
Duration	4	4	4	4
Year wise Actual Admissions	180	146	163	195
Cut off marks/rank of admission during the last three years	Minimum 80.00 Maximum 183.50	Minimum 115.25 Maximum 78.75	Minimum 149 Maximum 193.00	Minimum 94.75 Maximum 191.75
Fee	MGT-85000 TNEA - 50000	MGT-85000 TNEA - 50000	MGT-70000 TNEA - 55000	MGT-70000 TNEA - 45000
Placement Facilities	Internal Training (Aptitude, Communication& soft skill, Technical (C,C++,Java)), External Training Aptitude, Communication& soft skill, Technical(C,C++,Java)), ,Mock Interview, Online Assesment,Ebox,Company Specific Training ,Guest Lecture, Departmentwise Technical Training,Code vita and Enginex Contest Training.	Internal Training (Aptitude, Communication& soft skill, Technical(C,C++,Java)), External Training (Aptitude, Communication& soft skill, Technical(C,C++,Java)), ,Mock Interview, Online Assesment,Ebox,Company Specific Training ,Guest Lecture, Departmentwise Technical Training,Code vita and Enginex Contest Training.	Internal Training (Aptitude, Communication& soft skill, Technical(C,C++,Java)), External Training (Aptitude,Communication& soft skill, Technical(C,C++,Java)), ,Mock Interview, Online Assesment,Ebox,Company Specific Training ,Guest Lecture, Departmentwise Technical Training,Code vita and Enginex Contest Training.	Internal Training (Aptitude,Communication & soft skill, Technical(C,C++)), External Training (Aptitude,Communication & soft skill, Technical(C,C++)), ,Mock Interview, Online Assesment, Specific Training ,Guest Lecture, Departmentwise Technical Training,Code vita and Enginex Contest Training.
Campus placement in last three years with minimum salary, maximum salary and average salary	Minimum-72000 Maximum-500000	Minimum -78000 Maximum-550000	Minimum -94950 Maximum-397276	Minimum -94950 Maximum-550000

Name : **ELECTRICAL & ELECTRONICS ENGINEERING**

Course : **B.E.**

Level : **U.G**

	<b>2019-20</b>	<b>2018-19</b>	<b>2017-18</b>	<b>2016-17</b>
Number of Seats	120	120	120	240
Duration	4	4	4	4
Year wise Actual Admissions	107	89	86	124
Cut off marks/rank of admission during the last three years	Minimum 78.00 Maximum 170.50	Minimum 180.5 Maximum 78.75	Minimum 113.50 Maximum 187.50	Minimum 81.75 Maximum 189.75
Fee	MGT-85000 TNEA - 50000	MGT-50000 TNEA - 50000	MGT-70000 TNEA - 55000	MGT-70000 TNEA - 45000
Placement Facilities	Internal Training (Aptitude, Communication& soft skill, Technical(C,C++,Java)), External Training (Aptitude, Communication& soft skill, Technical(C,C++,Java)), ,Mock Interview, Online Assesment,Ebox,Company Specific Training ,Guest Lecture, Departmentwise Technical Training,Code vita and Enginex Contest Training.	Internal Training (Aptitude, Communication& soft skill, Technical(C,C++,Java)), External Training (Aptitude,Communication& soft skill, Technical(C,C++,Java)), ,Mock Interview, Online Assesment,Ebox,Company Specific Training ,Guest Lecture, Departmentwise Technical Training,Code vita and Enginex Contest Training.	Internal Training (Aptitude, Communication& soft skill, Technical(C,C++,Java)), External Training (Aptitude,Communication& soft skill, Technical(C,C++,Java)), ,Mock Interview, Online Assesment,Ebox,Company Specific Training ,Guest Lecture, Departmentwise Technical Training,Code vita and Enginex Contest Training.	Internal Training (Aptitude, Communication & soft skill, Technical(C,C++)), External Training (Aptitude,Communication & soft skill, Technical(C,C++)), ,Mock Interview, Online Assesment, Specific Training ,Guest Lecture, Departmentwise Technical Training,Code vita and Enginex Contest Training.
Campus placement in last three years with minimum salary, maximum salary and average salary	Minimum-72000 Maximum-500000	Minimum -84000 Maximum-550000	Minimum -97080 Maximum-383755	Minimum -120000 Maximum-420000

Name : **INFORMATION TECHNOLOGY**

Course : **B.Tech.**

Level : **U.G.**

	<b>2019-20</b>	<b>2018-19</b>	<b>2017-18</b>	<b>2016-17</b>
Number of Seats	60	60	60	60
Duration	4	4	4	4
Year wise Actual Admissions	60	58	57	48
Cut off marks/rank of admission during the last three years	Minimum 85.50 Maximum 172.25	Minimum 93.25 Maximum 177.50	Minimum 112.00 Maximum 179.00	Minimum 101.25 Maximum 186.00
Fee	MGT-85000 TNEA - 50000	MGT-85000 TNEA - 50000	MGT-70000 TNEA - 55000	MGT-70000 TNEA - 45000
Placement Facilities	Internal Training (Aptitude, Communication& soft skill, Technical(C,C++,Java)), External Training (Aptitude, Communication& soft skill, Technical(C,C++,Java)), ,Mock Interview, Online Assesment,Ebox,Company Specific Training ,Guest Lecture, Departmentwise Technical Training,Code vita and Enginex Contest Training.	Internal Training (Aptitude, Communication& soft skill, Technical(C,C++,Java)), External Training (Aptitude,Communication& soft skill, Technical(C,C++,Java)), ,Mock Interview, Online Assesment,Ebox,Company Specific Training ,Guest Lecture, Departmentwise Technical Training,Code vita and Enginex Contest Training.	Internal Training (Aptitude, Communication& soft skill, Technical(C,C++,Java)), External Training (Aptitude,Communication& soft skill, Technical(C,C++,Java)), ,Mock Interview, Online Assesment,Ebox,Company Specific Training ,Guest Lecture, Departmentwise Technical Training,Code vita and Enginex Contest Training.	Internal Training (Aptitude,Communication & soft skill, Technical(C,C++)), External Training (Aptitude,Communication & soft skill, Technical(C,C++)), ,Mock Interview, Online Assesment, Specific Training ,Guest Lecture, Departmentwise Technical Training,Code vita and Enginex Contest Training.
Campus placement in last three years with minimum salary, maximum salary and average salary	Minimum-72000 Maximum-500000	Minimum -82231 Maximum-500000	Minimum -96000 Maximum-1250000	Minimum -102000 Maximum-350000



Name : **CIVIL ENGINEERING**

Course : **B.E.**

Level : **U.G**

	<b>2019-20</b>	<b>2018-19</b>	<b>2017-18</b>	<b>2016-17</b>
Number of Seats	120	180	180	180
Duration	4	4	4	4
Year wise Actual Admissions	92	88	131	153
Cut off marks/rank of admission during the last three years	Minimum 79.00 Maximum 154.00	Minimum 80.00 Maximum 171.00	Minimum 126.25 Maximum 182.75	Minimum 100.00 Maximum 192.75
Fee	MGT-85000 TNEA - 50000	MGT-50000 TNEA - 50000	MGT-70000 TNEA - 50000	MGT-70000 TNEA - 40000
Placement Facilities	Internal Training (Aptitude, Communication & soft skill, Technical(C,C++,Java)), External Training (Aptitude,Communication & soft skill, Technical(C,C++,Java)), ,Mock Interview, Online Assesment,Ebox,Company Specific Training ,Guest Lecture, Departmentwise Technical Training,Code vita and Enginex Contest Training.	Internal Training (Aptitude, Communication & soft skill, Technical(C,C++,Java)), External Training (Aptitude,Communication & soft skill, Technical(C,C++,Java)), ,Mock Interview, Online Assesment,Ebox,Company Specific Training ,Guest Lecture, Departmentwise Technical Training,Code vita and Enginex Contest Training.	Internal Training (Aptitude, Communication & soft skill, Technical(C,C++,Java)), External Training (Aptitude,Communication & soft skill, Technical(C,C++,Java)), ,Mock Interview, Online Assesment,Ebox,Company Specific Training ,Guest Lecture, Departmentwise Technical Training,Code vita and Enginex Contest Training.	Internal Training (Aptitude,Communication & soft skill, Technical(C,C++)), External Training (Aptitude,Communication & soft skill, Technical(C,C++)), ,Mock Interview, Online Assesment, Specific Training ,Guest Lecture, Departmentwise Technical Training,Code vita and Enginex Contest Training.
Campus placement in last three years with minimum salary, maximum salary and average salary	Minimum-72000 Maximum-500000	Minimum-120000 Maximum-300000	Minimum -102000 Maximum-400000	Minimum -102000 Maximum-250000

Name : **AGRICULTURE ENGINEERING**

Course : **B.E.**

Level : **U.G**

	<b>2019-20</b>	<b>2018-19</b>	<b>2017-18</b>	<b>2016-17</b>
Number of Seats	60	60	60	60
Duration	4	4	4	4
Year wise Actual Admissions	65	59	59	58
Cut off marks/rank of admission during the last three years	Minimum 80.00 Maximum 172.00	Minimum 142.00 Maximum 183.75	Minimum 131.25 Maximum 185.00	Minimum 103.25 Maximum 187.25
Fee	MGT-85000 TNEA - 50000	MGT-85000 TNEA - 50000	MGT-70000 TNEA - 50000	MGT-70000 TNEA - 40000
Placement Facilities	Nil	Nil	Nil	Nil
Campus placement in last three years with minimum salary, maximum salary and average salary	Minimum-72000 Maximum-500000	Minimum -Nil Maximum-Nil	Minimum -Nil Maximum-Nil	Minimum -Nil Maximum-Nil

Name : **BIOMEDICAL ENGINEERING**

Course : **B.E.**

Level : **U.G**

	<b>2019-20</b>	<b>2018-19</b>	<b>2017-18</b>	<b>2016-17</b>
Number of Seats	60	60	60	60
Duration	4	4	4	4
Year wise Actual Admissions	60	51	55	49
Cut off marks/rank of admission during the last three years	Minimum 80.00 Maximum 167.00	Minimum 98.75 Maximum 190.50	Minimum 111.00 Maximum 191.50	Minimum 121.75 Maximum 180.00
Fee	MGT-85000 TNEA - 50000	MGT-85000 TNEA - 50000	MGT-70000 TNEA - 50000	MGT-70000 TNEA - 40000
Placement Facilities	Nil	Nil	Nil	Nil
Campus placement in last three years with minimum salary, maximum salary and average salary	Minimum-72000 Maximum-500000	Minimum -Nil Maximum-Nil	Minimum -Nil Maximum-Nil	Minimum -Nil Maximum-Nil

Name : **CHEMICAL ENGINEERING**

Course : **B.Tech.**

Level : **U.G.**

	<b>2019-20</b>	<b>2018-19</b>	<b>2017-18</b>	<b>2016-17</b>
Number of Seats	60	60	60	60
Duration	4	4	4	4
Year wise Actual Admissions	45	25	35	24
Cut off marks/rank of admission during the last three years	Minimum 80.00 Maximum 167.00	Minimum 110.25 Maximum 177.25	Minimum 115.75 Maximum 184.50	Minimum 94.75 Maximum 177.75
Fee	MGT-85000 TNEA - 50000	MGT-50000 TNEA - 50000	MGT-70000 TNEA - 50000	MGT-70000 TNEA - 40000
Placement Facilities	Internal Training (Aptitude,Communication& soft skill, Technical(C,C++,Java)), External Training (Aptitude,Communication& soft skill, Technical(C,C++,Java)), ,Mock Interview, Online Assesment, Specific Training ,Guest Lecture, Departmentwise Technical Training,.	Internal Training (Aptitude,Communication& soft skill, Technical(C,C++,Java)), External Training (Aptitude,Communication& soft skill, Technical(C,C++,Java)), ,Mock Interview, Online Assesment, Specific Training ,Guest Lecture, Departmentwise Technical Training,.	Nil	Nil
Campus placement in last three years with minimum salary, maximum salary and average salary	Minimum-72000 Maximum-500000	Minimum -102000 Maximum-360000	Minimum -Nil Maximum-Nil	Minimum -Nil Maximum-Nil

Name : **CAD/CAM**

Course : **M.E.**

Level : **P.G.**

	<b>2019-20</b>	<b>2018-19</b>	<b>2017-18</b>	<b>2016-17</b>
Number of Seats	18	18	18	18
Duration	2	2	2	2
Year wise Actual Admissions	8	9	4	1
Cut off marks/rank of admission during the last three years	NA	NA	NA	NA
Fee	MGT-10000	MGT-10000	MGT-50000 TNEA-50000	MGT-50000 TNEA-50000
Placement Facilities	Nil	Nil	Nil	Nil
Campus placement in last three years with minimum salary, maximum salary and average salary	Minimum -Nil Maximum-Nil	Minimum -Nil Maximum-Nil	Minimum -Nil Maximum-Nil	Minimum -Nil Maximum-Nil

Name : **COMPUTER SCIENCE AND ENGINEERING**

Course : **M.E.**

Level : **P.G.**

	<b>2019-20</b>	<b>2018-19</b>	<b>2017-18</b>	<b>2016-17</b>
Number of Seats	18	18	18	18
Duration	2	2	2	2
Year wise Actual Admissions	7	9	6	7
Cut off marks/rank of admission during the last three years	NA	NA	NA	NA
Fee	MGT-15000	MGT-15000	MGT-50000 TNEA-50000	MGT-50000 TNEA-50000
Placement Facilities	Nil	Nil	Nil	Nil
Campus placement in last three years with minimum salary, maximum salary and average salary	Minimum -Nil Maximum-Nil	Minimum -Nil Maximum-Nil	Minimum -Nil Maximum-Nil	Minimum -Nil Maximum-Nil

Name : **COMMUNICATION SYSTEMS**

Course : **M.E.**

Level : **P.G.**

	<b>2019-20</b>	<b>2018-19</b>	<b>2017-18</b>	<b>2016-17</b>
Number of Seats	18	18	18	18
Duration	2	2	2	2
Year wise Actual Admissions	6	18	4	3
Cut off marks/rank of admission during the last three years	NA	NA	NA	NA
Fee	MGT-15000	MGT-15000	MGT-50000 TNEA-50000	MGT-50000 TNEA-50000
Placement Facilities	Nil	Nil	Nil	Nil
Campus placement in last three years with minimum salary, maximum salary and average salary	Minimum -Nil Maximum-Nil	Minimum -Nil Maximum-Nil	Minimum -Nil Maximum-Nil	Minimum -Nil Maximum-Nil

Name : **POWER ELECTRONICS AND DRIVES**  
 Course : **M.E.**  
 Level : **P.G.**

	<b>2019-20</b>	<b>2018-19</b>	<b>2017-18</b>	<b>2016-17</b>
Number of Seats	18	18	18	18
Duration	2	2	2	2
Year wise Actual Admissions	7	6	2	1
Cut off marks/rank of admission during the last three years	NA	NA	NA	NA
Fee	MGT-10000	MGT-10000	MGT-50000 TNEA-50000	MGT-50000 TNEA-50000
Placement Facilities	Nil	Nil	Nil	Nil
Campus placement in last three years with minimum salary, maximum salary and average salary	Minimum -Nil Maximum-Nil	Minimum -Nil Maximum-Nil	Minimum -Nil Maximum-Nil	Minimum -Nil Maximum-Nil



Name : **STURCTURAL ENGINEERING**  
 Course : **M.E.**  
 Level : **P.G.**

	<b>2019-20</b>	<b>2018-19</b>	<b>2017-18</b>	<b>2016-17</b>
Number of Seats	18	18	18	18
Duration	2	2	2	2
Year wise Actual Admissions	18	16	12	11
Cut off marks/rank of admission during the last three years	NA	NA	NA	NA
Fee	MGT-25000	MGT-25000	MGT-50000 TNEA-50000	MGT-50000 TNEA-50000
Placement Facilities	Nil	Nil	Nil	Nil
Campus placement in last three years with minimum salary, maximum salary and average salary	Minimum -Nil Maximum-Nil	Minimum -Nil Maximum-Nil	Minimum -Nil Maximum-Nil	Minimum -Nil Maximum-Nil

## 7. Faculty

### Annexure - I

## 8. Profile of Principal

### Annexure - II

## 9. Fee

### **FEE STRUCTURE**

By Committee on fee Fixation, Tamil Nadu

Ref.No: PROC.NO.CFF/Engineering/Fees/029/2017

The following fee structure will take effect for the batch of the students admitted for the academic year 2017-2018, 2018-2019 & 2019-2020.

Sl. No	Name of the Course	Accredited Status	Fee fixed by the Committee Rs.	Remarks
1	<b>B.E./B.TECH./B.Arch. (Category – I)</b>	Non-Accredited Courses	50,000/Annum	The fee is an all inclusive annual fee including various fees like Tuition fee, Admission fee, Special fee, Laboratory / Computer Internet fee, Library fee, Sports fee, Maintenance and Amenities fee, Extracurricular activities fee, and other recurring expenditure.
		Accredited Courses	55,000/Annum	
2	<b>B.E./B.TECH./B.Arch. (Category – I)</b>	Non-Accredited Courses	85,000/Annum	
		Accredited Courses	87,000/Annum	
4	<b>ME/M.Tech./M.Arch.</b>	Non-Accredited Courses	25,000/Semester	
		Accredited Courses	30,000/Semester	

- Time schedule for payment of fee for the entire programme  
Total duration of the Course –  
B.E. Degree 4 Years (Regular) & 3 Years (Lateral Entry)  
M.E. Degree 2 Years (Regular)  
Time Schedule for Payment of Fee - One Time per Year.
- No. of Fee waivers granted with amount and name of students - NIL
- Number of scholarship offered by the Institution, duration and amount

<b>CONCESSION AVAILED FOR THE YEAR 2019-20</b>			
<b>SL NO</b>	<b>PARTICULARS</b>	<b>NO OF STUDENTS</b>	<b>AMOUNT</b>
1	I YEAR	608	1,54,08,300
2	II YEAR	245	96,52,900
3	III YEAR	109	22,20,900
4	IV YEAR	64	18,40,100
<b>TOTAL</b>			<b>2,91,22,200</b>

- Criteria for fee waivers/scholarship

#### **AICTE Tuition Fee Waiver (TFW) Scheme**

This scheme is applicable in Self-Financing Engineering Colleges and Self-Supporting courses in Government Aided Engineering Colleges only. AICTE Tuition fee waiver scheme is applicable for B.E./B.Tech. courses only. Seats up to a maximum of 5 percent of sanctioned intake per course may be available under the scheme. Tuition fee waiver under First Graduate scheme is provided by Government whereas, AICTE TFW scheme is provided by the Management of the Institution. Sons and daughters of parents whose annual income is less than ` 4.50 lakhs from all sources shall only be eligible under this scheme.

All other fees except tuition fee will have to be paid by the candidate under both First Graduate Fee Concession and Fee Waiver. Beneficiary student admitted under AICTE TFW scheme will not be allowed to change Institution / course under any circumstances.

#### **Post Matric Scholarship**

In the G.O. (st) No. 6 Adi Dravidar and Tribal Welfare (AD3) Department dated 09.01.2012, G.O. (st) No. 92 Adi Dravidar and Tribal Welfare (AD3) Department dated 11.09.2012 and G.O. (st) No. 16 Adi Dravidar and Tribal Welfare (AD3) Department dated 24.02.2014, the Government have ordered to grant Post Matric Scholarship to SC/SCA/ST candidates, whose parental annual income is less than ` 2,50,000/- and for SC/SCA converted Christians annual income less than ` 2,00,000/- from all the sources shall only be eligible. The eligible candidates have to submit income certificate obtained from appropriate authorities and get the Post Matric Scholarship from the colleges where they get admitted.

- Estimated cost of Boarding and Lodging in Hostels - **Rs 58,500/- (Per Year)**

## 10. Admission

- Number of seats sanctioned with the year of approval

### B.E-Degree Courses

Sl. No	B.E-Degree Course	2020-21	2019-20	2018-19	2017-18	2016-17
1	Mechanical Engineering	240	240	240	240	240
2	Computer Science and Engineering	180	180	180	180	240
3	Electronics and Communication Engg.	180	180	180	180	240
4	Electricals and Electronics Engineering	120	120	120	120	240
5	Information Technology	60	60	60	60	60
6	Civil Engineering	120	180	180	180	180
7	Chemical Engineering	60	60	60	60	60
8	Agriculture Engineering	60	60	60	60	60
9	Biomedical Engineering	60	60	60	60	60
10	Computer Science and Business Systems	60	-	-	-	-
11	Biotechnology	60	-	-	-	-
12	Fashion Technology	-	-	-	-	60
13	Electronics and Instrumentation Engg.	-	-	-	-	60
<b>TOTAL INTAKE</b>		<b>1200</b>	<b>1140</b>	<b>1140</b>	<b>1140</b>	<b>1500</b>

### M.E-Degree Courses

Sl. No	M.E-Degree Course	2020-21	2019-20	2018-19	2017-18	2016-17
1	M.E-CAD/CAM	18	18	18	18	18
2	M.E-Communication Systems	18	18	18	18	18
3	M.E - Computer Science and Engineering	18	18	18	18	18
4	M.E- Power Electronics and Drives	18	18	18	18	18
5	M.E - Structural Engineering	18	18	18	18	18
<b>TOTAL INTAKE</b>		<b>90</b>	<b>90</b>	<b>90</b>	<b>90</b>	<b>90</b>

- Number of Students admitted under various categories each year in the last three years

## FIRST YEAR

Si. No	Department	2019-20	ADMITTED STRENGTH		2018-19	ADMITTED STRENGTH		2017-18	ADMITTED STRENGTH	
			TOTAL	GQ		MQ	TOTAL		GQ	MQ
		INTAKE			INTAKE			INTAKE		
1	Mechanical Engg	240	143	78	240	118	77	240	122	118
2	Computer Science Engg	180	106	75	180	96	84	180	87	73
3	Electronics and Communication Engg.	180	96	84	180	94	54	180	88	75
4	Electrical and Electronics Engg.	120	64	43	120	56	33	120	41	45
5	Information Technology	60	36	24	60	29	29	60	23	34
6	Civil Engineering	120	54	37	180	45	42	180	79	51
7	Chemical Engineering	60	30	15	60	10	13	60	27	8
8	Bio Medical Engg	60	33	27	60	31	20	60	29	26
9	Agriculture Engg	60	35	30	60	37	22	60	33	26
<b>TOTAL</b>		1140	1080	<b>597</b>	<b>413</b>	1140	516	374	1140	529
<b>CONSOLIDATED TOTAL</b>		1080	<b>1010</b>		1140	<b>890</b>		1140	<b>985</b>	

## LATERAL ENTRY

Si. No	Department	2019-20 ADMITTED STRENGTH			2018-19 ADMITTED STRENGTH			2017-18 ADMITTED STRENGTH		
		GQ	MQ	TOTAL	GQ	MQ	TOTAL	GQ	MQ	TOTAL
1	Mechanical Engg	26	43	<b>69</b>	25	29	<b>54</b>	23	27	<b>50</b>
2	Computer Science Engg	8	5	<b>13</b>	1	1	<b>2</b>	2	1	<b>3</b>
3	Electronics and Communication Engg.	8	3	<b>11</b>	3	2	<b>5</b>	3	4	<b>7</b>
4	Electrical and Electronics Engg.	12	18	<b>30</b>	11	9	<b>20</b>	10	9	<b>19</b>
5	Information Technology	0	0	<b>0</b>	0	1	<b>1</b>	0	0	<b>0</b>
6	Civil Engineering	23	29	<b>52</b>	24	27	<b>51</b>	19	22	<b>41</b>
7	Chemical Engineering	0	0	<b>0</b>	0	1	<b>1</b>	0	1	<b>1</b>
8	Bio Medical Engg	0	0	<b>0</b>	0	1	<b>1</b>	0	0	<b>0</b>
9	Agriculture Engg	0	0	<b>0</b>	0	0	<b>0</b>	0	0	<b>0</b>
<b>TOTAL</b>		<b>77</b>	<b>98</b>	<b>175</b>	<b>64</b>	<b>71</b>	<b>135</b>	<b>57</b>	<b>64</b>	<b>121</b>

## M.E DEGREE

S. No	Dept	2019-20			2018-19			2017-18		
		G Q	M Q	Total	G Q	M Q	Total	G Q	M Q	Total
1	M.E - Structural Engineering	2	16	18	NA	16	16	2	10	12
2	M.E - CAD / CAM	0	8	8	NA	9	9	0	4	4
3	M.E - Communication Systems	0	6	6	NA	18	18	0	4	4
4	M.E - Computer Science & Engineering	0	7	7	NA	9	9	0	6	6
5	M.E - Power Electronics & Drives	0	7	7	NA	6	6	0	2	2
<b>TOTAL</b>		<b>2</b>	<b>44</b>	<b>46</b>	<b>0</b>	<b>58</b>	<b>58</b>	<b>2</b>	<b>26</b>	<b>0</b>

Number of applications received during last two years for admission under Management Quota and number admitted.

Si. No	I YEAR		LATERAL ENTRY		ME DEGREE	
	No. of Application Received	No. of Students Admitted	No. of Application Received	No. of Students Admitted	No. of Application Received	No. of Students Admitted
<b>2019-20</b>	1130	1010	203	175	71	46
<b>2018-19</b>	910	890	156	135	65	58
<b>2017-18</b>	1017	985	148	121	51	28

### 11. Admission Procedure

Mention the admission test being followed, name and address of the Test Agency and its URL	<b>NOT APPLICABLE</b>
Number of seats allotted to different Test Qualified candidate separately (AIEEE/ CET (State conducted test/ University tests/ CMAT/ GPAT)/ Association conducted test)	<b>NOT APPLICABLE</b>
Calendar for admission against Management/vacant seats	<b>May to July [Every Year]</b>
Last date of request for applications	<b>TNEA : 2 JUNE 2019 MANAGEMENT : 9 JULY 2019</b>
Last date of submission of applications	<b>TNEA : 2 JUNE 2019 MANAGEMENT : 9 JULY 2019</b>

Dates for announcing final results	<b>TNEA : 28 JUNE 2019 MANAGEMENT : 16 JULY 2019</b>
Release of admission list (main list and waiting list shall be announced on the same day)	<b>TNEA : 28 JUNE 2019 MANAGEMENT : 16 JULY 2019</b>
Date for acceptance by the candidate (time given shall in no case be less than 15 days)	<b>TNEA : As per Anna University TNEA Norms MANAGEMENT : Before Reopening</b>
Last date for closing of admission	<b>TNEA : 28 JUNE 2019 MANAGEMENT : 16 JULY 2019</b>
Starting of the Academic session	<b>August [As per Anna University Guidelines]</b>
The waiting list shall be activated only on the expiry of date of main list	--
The policy of refund of the fee, in case of withdrawal, shall be clearly notified	<b>As per Anna University Chennai Norms</b>

## 12. Criteria and Weightages for Admission

Describe each criteria with its respective weightages i.e. Admission Test, marks in qualifying examination etc.

Mention the minimum level of acceptance, if any

### Eligibility Criteria

Admission Eligibility to First Year B.E./B.TECH

### Candidates of HSC (Academic) and Other Equivalent Examinations:

**A pass** in the HSC (Academic) or its equivalent with a minimum average percentage in Mathematics, Physics and Chemistry put together as given below.

SI.No	Community	A Pass with Minimum average marks in Mathematics Physics and Chemistry put together
1.	General Category	45.00%
2.	Backward Class including Backward Class Muslim	40.00%
3.	MBC & DNC	40.00%
4.	SC/SCA/SCT	40.00%

(OR)

### Candidates of HSC (Vocational):

**A pass** in any one of the HSC (Vocational Subject) as given below with any one of the Engineering related subjects namely Mathematics, Physics or Chemistry with a minimum average percentage put together as given below.

Sl.No	Community	A Pass with Minimum average marks in Mathematics Physics, Chemistry, Vocational Theory and Practicals put together
1.	General Category	45.00%
2.	Backward Class including Backward Class Muslim	40.00%
3.	MBC & DNC	40.00%
4.	SC/SCA/SCT	40.00%

#### Vocational Courses prescribed for B.E. / B.Tech. Degree Admission

Group Code	Name of the Vocational Subjects
421	General Machinist
422	Electrical Machines and Appliances
423	Electronic Equipments
424	Draughtsman Civil
425	Auto Mechanic
426	Textile Technology

#### Note:

1. When the candidates produce grade certificates, they have to produce the actual marks also otherwise only the minimum marks applicable to the grades in the eligible subjects (Mathematics, Physics, Chemistry and Fourth Optional Subject) shall be taken into account.
2. For minimum eligibility rounding of marks and normalised marks will not be considered

#### NON RESIDENT INDIAN – NRI

#### MINIMUM ELIGIBILITY MARKS FOR NRI

Sl.No	Community	A Pass with Minimum Average Marks in Relevant subject as applicable (HSC – Academic or Vocational)
1	General Category (OC)	45%
2	Reserved Categories including BC/BCM/MBC/DNC/SC/SCA/ST	40%

#### FN/PIO/OCI /CIWGC

#### MINIMUM ELIGIBILITY MARKS FOR FN/OCI/PIO/CIWGC

Sl.No	Community	A Pass with Minimum Average Marks in Relevant subject as applicable (HSC – Academic or Vocational)
1	General Category (Only one Category)	45%



**Admission Eligibility to Second Year B.E./B.TECH under Lateral Entry (For Diploma and B.Sc., Candidates)**

<b>Community</b>	<b>Minimum Eligibility Marks</b>
General Category	55.00%
Backward Class including Backward Class Muslim	50.00%
Most Backward Class and Denotified Communities	45.00%
SC/ SCA/ ST	Mere pass in the qualifying Examination

Mode of Study	Qualifying Examination marks to be considered for calculation of minimum eligibility marks
Full Time Diploma/ B.Sc	Overall percentage of marks obtained by the candidate from 1 <sup>st</sup> semester to 6 <sup>th</sup> semester
Lateral Entry Diploma	Overall percentage of marks obtained by the candidate from 3 <sup>rd</sup> semester to 6 <sup>th</sup> semester
Sandwich Diploma	Overall percentage of marks obtained by the candidate from 1 <sup>st</sup> semester to 7 <sup>th</sup> semester excluding the in-plant training marks
Part Time Diploma	Overall percentage of marks obtained by the candidate from 1 <sup>st</sup> semester to 8 <sup>th</sup> semester

**Eligibility Requirements for M.E:**

A pass in a recognised Bachelor's degree or equivalent in the relevant field and obtained atleast 50% (45 % in the case of candidates belonging to reserved category) in the qualifying B.E./B.Tech degree examination.

**Note:**

- Candidates admitted through Lateral Entry in degree courses are not eligible except B.E./B.Tech.
- Candidates with B.E./B.Tech., Degrees obtained through Distance mode/Week End courses are not eligible

Mention the cut-off levels of percentage and percentile score of the candidates in the admission test for the last three years

a)  
**B.E DEGREE (I YEAR)**

RANK DETAILS																		
2017-18																		
ALLOTTED COMMUNITY	AGRI ENGG		BIO-MEDICAL		CIVIL ENGG		CHEMICAL		CSE		ECE		EEE		IT		MECH	
	MAX	MIN	MAX	MIN	MAX	MIN	MAX	MIN	MAX	MIN	MAX	MIN	MAX	MIN	MAX	MIN	MAX	MIN
OC	185.00	162.50	191.50	166.50	182.75	133.75	184.50	154.50	181.00	159.00	193.00	161.25	187.50	140.25	179.00	139.50	183.00	156.00
BC	160.75	147.50	164.50	157.00	132.25	105.25	149.00	141.75	157.50	142.75	160.00	148.25	139.50	133.75	139.50	137.00	155.75	146.50
BCM	146.00	-	166.25	-	133.75	122.75	120.00	-	152.25	142.50	158.00	137.25	138.75	133.25	138.75	-	155.00	140.50
MBC/DNC	161.75	134.00	159.50	116.00	132.25	96.25	137.50	123.25	158.00	107.25	160.25	104.25	127.50	98.25	139.50	112.00	149.50	117.50
SC	151.75	131.25	151.50	111.00	129.25	126.25	135.25	115.75	139.00	124.75	152.25	149.00	136.00	113.50	-	-	152.00	78.75
ST	-	-	-	-	-	-	-	-	107.50	-	-	-	-	-	-	-	-	-
SCA	-	-	-	-	-	-	-	-	-	-	-	-	-	-	-	-	139.75	-

RANK DETAILS																		
2018-19																		
ALLOTTED COMMUNITY	AGRI ENGG		BIO-MEDICAL		CIVIL ENGG		CHEMICAL		CSE		ECE		EEE		IT		MECH	
	MAX	MIN	MAX	MIN	MAX	MIN	MAX	MIN	MAX	MIN	MAX	MIN	MAX	MIN	MAX	MIN	MAX	MIN
OC	183.75	160.00	190.50	161.75	171.00	80.00	177.25	110.25	180.00	149.50	188.50	144.00	180.50	123.50	177.50	138.25	174.25	130.00
BC	157.50	144.50	161.50	111.75	-	-	-	-	149.00	134.75	143.25	120.00	123.25	94.00	137.50	125.25	145.00	94.50
BCM	145.25	138.75	159.50	-	-	-	-	-	147.25	132.00	142.25	139.00	123.00	97.25	133.50	123.75	127.25	111.75
MBC/DNC	156.75	130.50	149.25	117.25	-	-	-	-	147.25	119.50	140.25	83.50	123.00	86.25	131.75	111.75	125.00	81.25
SC	154.25	142.00	153.00	98.75	-	-	-	-	145.00	97.75	145.75	78.75	121.75	82.75	98.50	93.25	127.50	81.50
ST	-	-	-	-	-	-	-	-	-	-	-	-	-	-	-	-	-	-
SCA	140.75	-	79.00	-	-	-	-	-	-	-	-	-	-	-	97.25	-	92.25	-

RANK DETAILS																		
2019-20																		
ALLOTTED COMMUNITY	AGRI ENGG		BIO-MEDICAL		CIVIL ENGG		CHEMICAL		CSE		ECE		EEE		IT		MECH	
	MAX	MIN	MAX	MIN	MAX	MIN	MAX	MIN	MAX	MIN	MAX	MIN	MAX	MIN	MAX	MIN	MAX	MIN
OC	172.00	143.00	164.00	140.00	154.00	102.00	167.00	118.00	189.50	137.00	157.50	125.00	148.50	112.00	154.00	127.00	177.25	112.50
BC	140.00	106.50	139.00	121.50	121.50	83.00	112.50	90.00	136.50	120.50	124.50	107.50	112.00	90.50	126.00	115.00	112.50	93.00
BCM	141.00	141.00	139.50	118.00	99.00	84.00	143.00	117.50	130.00	125.50	125.00	120.50	107.50	92.50	124.50	124.50	111.50	105.50
MBC/DNC	122.00	91.50	139.50	81.50	122.50	83.50	122.50	109.00	136.50	97.00	131.75	86.00	109.50	84.00	123.50	89.50	117.25	80.00
SC	131.00	100.50	128.50	83.00	132.50	-	113.00	91.50	134.00	80.00	154.00	80.00	109.50	82.00	127.50	99.00	112.75	82.50
ST	-	-	-	-	-	-	-	-	-	-	-	-	-	-	-	-	-	-
SCA									131.00	103.50			87.00	86.50	96.00	96.00	111.50	85.00

**b) B.E DEGREE (LATERAL ENTRY 2019)**

Common application form to seek admission to University Departments, University Colleges, Government and Government aided Engineering Colleges and for the seats surrendered by Self-financing Engineering Colleges under Unified Single Window Admission System for Indian Nationals.

**Important Notice:**

Application are invited only through online mode up to 5.00 PM on or before 14-June-2019 for **Admission to Second Year B.E/B.Tech.Degree Courses 2019-2020.**

Copies of the following documents should be enclosed

- Printed online application.
- All Semester Mark Sheets (All appearances) of Diploma./B.Sc. or Equivalent Examinations (Xeroxing both sides).
- Diploma/Degree or Provisional Certificate
- Transfer Certificate
- Permanent Community Certificate Card(except Others(OC) candidates).

- Nativity Certificate –if applicable
- Plus Two Mark Sheet (for B.Sc. and Lateral Entry Diploma candidates)
- First Graduate Certificate -if applicable
- Srilankan Tamil Refugee certificate – if applicable
- Must enclose Your DD (Demand Draft Original) for except(SC,SCA,ST candidates).
- Demand Draft for Rs.300 Drawn in favour of The Secretary Direct Second Year B.E. Admissions 2019,ACGCET,Karaikudi, payable at Karaikudi

**Counselling Center: Alagappa Chettiar Government College Of Engineering and technology, Karaikudi - 630003**

**Choice of College and Branch:** Candidate may choose at the time of counselling.

**c) M.E DEGREE**

The procedure for seeking admission to MBA, MCA and M.E./M.Tech./M.Arch./M.Plan. Degree programmes for the academic year consists of the following two steps:

1. Appearing for the Tamil Nadu Common Entrance Test (TANCET) In May Every Year.
2. Applying for admission to the admitting authorities concerned. [Management Entrance Test Will be conducted by Tirunelveli Anna University of Technology Self Financing Engineering Colleges Management Association and the Rank List will be published in the month of August]

**TIRUNELVELI ANNA UNIVERSITY OF TECHNOLOGY SELF FINANCING ENGINEERING COLLEGES MANAGEMENT ASSOCIATIONS,  
MADURAI - 625020**

**PROVISIONAL MERIT LIST FOR M.B.A./M.C.A./M.E./M.Tech. PG COURSES – 2019**

**SethuInstituteofTechnology,Pulloor, Kariapatti, Virudhunagar District.**

**Course : M.E/M.Tech/M.Arch.**

RANK	REGNO	NAME OF THE STUDENT	TOTAL MARK
1	502457	MUPPIDATHI M	80.83
2	502448	KARTHICK.K	80.83
3	550017	ABDUL RAHUMAN K	80.67
4	502451	VIJAY SELVAN.M	80.50
5	502440	SHARMILA DEVI.G.R	80.50
6	502446	RAJAMANICKAM G	80.33
7	502441	ARUNPRABHAHARAN M	80.00
8	502476	DHIVYA.G.S	80.00
9	502461	GOKUL KUMAR V	80.00
10	502473	DEENU PRIYA S	77.50
11	502474	SURENDRAN.M	75.83
12	502465	RADHIKA.V	75.83
13	502454	MANIRATHINAM B V	75.00
14	502449	BALAJI PANDIAN V	74.17
15	502481	ANISHA NASRIN.A	74.17
16	502459	NUMAIR ABDUL MUSAWWIR S J	74.17
17	502442	VALARMATHI.S	74.17
18	502445	PRASANNA JENIFER GOLDA J	73.33
19	502439	RAGAVENDRA RAO.S	73.33
20	502458	SETHURAMAN KARTHICK R	73.33
21	502443	VIJAY ANAND K	72.50
22	502444	ASFAR NOWSATH I	72.50
23	502436	MAHALAXMI.R	72.50
24	502477	KARPAGAMBIGAI P	72.50
25	502478	RIYAS PARVEEN S	71.67

RANK	REGNO	NAME OF THE STUDENT	TOTAL MARK
26	502463	KRITHIKA KAMAIAM.C	71.67
27	502480	SWETHA M	71.67
28	502456	JAIGANESH P M	70.83
29	502464	LAKSHMI PRIYA J	70.83
30	502470	SUBANANDHINI.N	69.17
31	502462	SATHIYANARAYANAN.G	68.33
32	502452	RAMALAKSHMI S	68.33
33	502455	AJITH KUMAR S	68.33
34	502469	CHARULATHA C	67.50
35	502453	DHIVYA M	66.67
36	502479	THERASAL SAROJA.A.P	66.67
37	502450	RAMYA A	65.83
38	502472	MOSES PRAVIN J	65.83
39	502437	UMA MANIMEGALAI.K	65.83
40	502460	DURAIMUTHU P	64.17
41	502447	SIDDHANANDHAKUMAR M	64.17
42	502438	THIRUSELVI P	64.17
43	502475	SARANKUMAR M	64.17
44	502482	RADHIKA.D	63.33
45	502471	JOSEPH GNANARAJ S	59.17
46	502486	ABDUL LATHIF M S	45.67
47	502487	MUMTAJ NISHA. A	45.67
48	502484	DHWARITHAA R	45.17
49	502483	A B D U L R A H U M A N K	45.00
50	502485	SARANYA.S	45.00

## **15. Information of Infrastructure and Other Resources Available**

Number of Class Rooms and size of each  
Number of Tutorial rooms and size of each  
Number of Laboratories and size of each  
Number of Drawing Halls with capacity of each  
Number of Computer Centres with capacity of each  
Central Examination Facility, Number of rooms and capacity of each

### **Annexure - III**

Barrier Free Built Environment for disabled and elderly persons

Occupancy Certificate

Fire and Safety Certificate

### **Annexure – IV**

Hostel Facilities

### **Library**

Number of Library books/ Titles/ Journals available (program-wise)  
List of online National/ International Journals subscribed  
E- Library facilities

### **Annexure – V**

### **Computing Facilities**

Internet Bandwidth	:	<b>500 Mbps</b>
Number and configuration of System	:	<b>Intel Pentium, Core i3 &amp; i5</b>
Total number of system connected by LAN	:	<b>1360</b>
Total number of system connected by WAN	:	<b>1360</b>
Major software packages available	:	<b>22</b>
Special purpose facilities available	:	<b>Wi-Fi enabled campus &amp; Backup Facility</b>

### **Laboratory and Workshop**

List of Major Equipment/Facilities in each Laboratory/ Workshop  
List of Experimental Setup in each Laboratory/ Workshop

### **Annexure – VI**

### **Innovation Cell**

R&D Innovation Cell consists of a coordinator and faculty representatives from all departments. The responsibilities are to identify innovative technical ideas from faculty members and students, to provide a forum to exhibit their talents in Faculty contest and Student contest, motivating them to convert the innovation to patents, and encouraging them to develop products. There are 6 patents obtained and 11 patents have been filed through innovation cell. It encourages faculty and students in research and helps in implementing innovative ideas across various domains. Students are also encouraged to do innovative

projects. Patent awareness programs are conducted to obtain more patents. the best projects are awarded and encouraged to apply for patent by cell

### **Social Media Cell**

Compliance of the National Academic Depository (NAD), applicable to PGCM/ PGDM

Our college registered in the National Academic Depository

### **List of facilities available**

Games and Sports Facilities

#### **Details of Sports Facilities:**

To provide opportunities to the students particularly in sports and games activities the following facilities are provided in the campus.

#### **Outdoor facilities**

1. Basket Ball Court
2. Volley Ball Court
3. Cricket Ground
4. Foot ball Ground
5. Hockey Ground
6. Badminton Court

#### **Indoor facilities**

7. Chess
8. Carom
9. Table tennis
10. Gym for boys (12 station)
11. Gym for girls (4 station)
12. Tumbles - weight lifting
13. Ergo cycle 8. Body shaper

#### **B. Tracks & Fields:**

400 meters track, parallel bars, rings and other field events.

#### **C. Awards:**

Every year all the students are divided into four houses and intramural sports and games are conducted. It culminates on sports day and awards are given for first three places, in all the events. Depending on individual point per student champion of the year is declared. The house, which gets maximum points, is honoured with a rolling trophy.

### **Extra-Curricular Activities**

#### **Soft Skill Development Facilities**

The college has a dedicated team of faculty members to impart exclusive training to the students in Soft skills and personality development. The Training and Placement Cell brings in soft skill trainers and eminent resource persons from various industries for personal enhancement and development. The soft skill training is provided from the first year onwards to enhance the personal development of students.

## Communication skill development

The college takes the initiative for enhancement of proficiency in English Language skills from first year onwards. Gradual development of such skills may happen only when the training begins from the first semester. Students of the college are also given a platform to enhance aptitude and verbal skills continuously.

## Career guidance

The college offers career guidance for further studies, employment opportunities in government as well as private sectors and also in the field of entrepreneurship. Offering such valuable guidance to the students at the right time makes a great impact in the choice of their career as well as in the progress towards the chosen career. Exposure is given to students on avenues open to students in foreign universities, scholarships and immigration through the Career Guidance Cell which is a part of Placement cell. Students are motivated to participate in competitive exams like, TNPSC, UPSC, Defense services, MONET, GRE, CAT, MAT, GATE, IELTS, TOEFL etc. through Career Guidance Cell.

## Sports and Games

The college is facilitated with a 25 acre sports village with 400 meter track along with the drainage system. The College also provides facilities to maintain physical fitness of students by establishing gymnasiums in the sports village and in their respective hostels. The following table provides the details of various sports and games available for students.

S.No	Name of the Sports and games
1	Hockey
2	Football
3	Volleyball
4	Basket Ball
5	Badminton
6	Ball Badminton
7	Kho-Kho
8	Cricket
9	Chess
10	Athletics
11	Throw Ball
12	Yoga
13	Hurdles
14	Tennis
15	Fencing
16	Boxing
17	Weight lifting

## Cultural Events

The college has organized various cultural events to bring out the talents of students. A pivotal role is played by Fine Arts Association to organize various like fine arts and cultural events. The women empowerment activities that pave way for enormous talents of students to be exhibited. The lists of cultural events are given in the following table.



S.No	Cultural Events
1	Dance
2	War of dance
3	Dance floor
4	Western & Carnatic Dance
5	Nadanasrishti
6	Solo dance
7	Insync Group Dance
8	Free style dance
9	Adapt tune
10	Video choreography
11	Tamil & English essay writing
12	Speech contest
13	Just a minute
14	Stage breakers
15	Tamil elocution
16	Tamil Turncoat
17	Turn Coat English

Cultural events are organized in an air-conditioned auditorium named Pavendhar Bharathidhasan Arangam which has the capacity to accommodate 600 students with the latest audio-visual systems. Besides, major cultural events are organized in the Open air theatre which has a seating capacity of 5000.

Fine Arts Association conducts Rangoli, Mehendi, Cartooning, Painting, Art from waste, Dance, Orchestra, Elocution, Dumb Charade, Cartoon drawing, Recitation, Verse writing and skit competitions to bring out the talents of students. Fine Arts Association also invites guests from the world of music, art, theatre etc.

### **Extra Curricular**

#### **National Service Scheme Unit**

NSS Unit I & II provides opportunities to students to work on different projects which include social work, literacy, relief work and basic education.

A green environment atmosphere is created by NSS volunteers by planting tree saplings every year in and around the college campus. Hundred students been enrolled as volunteers in each unit. The NSS Units also conduct AIDS Awareness programs, Personality Development programs and Sapling festivals etc.

The NSS units have also organized special camps in nearby villages. The significance of the special camp is to create awareness about importance of technical education, pollution free environment, fire accident and its safety measures, the effects of tobacco etc.

#### **Red Ribbon Club**

The RRC aims at harnessing the potential of the youth by equipping with appropriate information on HIV/AIDS prevention, care, support and treatment. It also aims to build the capacity as peer educators to spread the message among the youth on HIV/AIDS, positive health behavior. Blood donation camps are organized by the student volunteers in the college to succor the needy

#### **Youth Red Cross**

The YRC student volunteers have made a significant contribution in meeting the needs of the most vulnerable people in the society through YRC programmes. The Youth Red Cross unit of the college

organizes activities that cultivate a humanitarian spirit and conducts training on safety, primary health care and healthy living.

### **Women Empowerment cell**

Women Empowerment cell is to enhance understanding of issues related to girl students. With a view to taking up women's issues and problems, the cell aims at creating awareness of their rights and duties. It also provides a platform for women to share their experiences and views regarding their status in the society and to suggest ways to improve and empower themselves.

### **Teaching Learning Process**

Curricula and syllabus for each of the programmes as approved by the University

#### **Annexure - VII**

Academic Calendar of the University

Academic Time Table with the name of the Faculty members handling the Course

Teaching Load of each Faculty

#### **Annexure - VIII**

- Internal Continuous Evaluation System and place
- Student's assessment of Faculty, System in place

#### **Annexure - IX**

### **For each Post Graduate Courses give the following:**

Title of the Course

- ❖ M.E. CAD/CAM
- ❖ M.E. Communication Systems
- ❖ M.E. Computer Science & Engg.
- ❖ M.E. Power Electronics & Drives
- ❖ M.E. Structural Engg.

Laboratory facilities exclusive to the Post Graduate Course

Well equipped laboratories are exclusively available for PG courses

### **Special Purpose**

Software, all design tools in case

Academic Calendar and frame work

## 16. Enrollment of students in the last 3 years

- 2019-20
- 2018-19
- 2017-18

### FIRST YEAR

Si. No	Department	2019-20	ADMITTED STRENGTH		2018-19	ADMITTED STRENGTH		2017-18	ADMITTED STRENGTH	
		TOTAL	GQ	MQ	TOTAL	GQ	MQ	TOTAL	GQ	MQ
		INTAKE			INTAKE			INTAKE		
1	Mechanical Engg	240	143	78	240	118	77	240	122	118
2	Computer Science Engg	180	106	75	180	96	84	180	87	73
3	Electronics and Communication Engg.	180	96	84	180	94	54	180	88	75
4	Electrical and Electronics Engg.	120	64	43	120	56	33	120	41	45
5	Information Technology	60	36	24	60	29	29	60	23	34
6	Civil Engineering	120	54	37	180	45	42	180	79	51
7	Chemical Engineering	60	30	15	60	10	13	60	27	8
8	Bio Medical Engg	60	33	27	60	31	20	60	29	26
9	Agriculture Engg	60	35	30	60	37	22	60	33	26
<b>TOTAL</b>		1140	1080	<b>597</b>	<b>413</b>	1140	516	374	1140	529
<b>CONSOLIDATED TOTAL</b>		1080	<b>1010</b>		1140	<b>890</b>		1140	<b>985</b>	

## LATERAL ENTRY

Si. No	Department	2019-20 ADMITTED STRENGTH			2018-19 ADMITTED STRENGTH			2017-18 ADMITTED STRENGTH		
		GQ	MQ	TOTAL	GQ	MQ	TOTAL	GQ	MQ	TOTAL
1	Mechanical Engg	26	43	69	25	29	54	23	27	50
2	Computer Science Engg	8	5	13	1	1	2	2	1	3
3	Electronics and Communication Engg.	8	3	11	3	2	5	3	4	7
4	Electrical and Electronics Engg.	12	18	30	11	9	20	10	9	19
5	Information Technology	0	0	0	0	1	1	0	0	0
6	Civil Engineering	23	29	52	24	27	51	19	22	41
7	Chemical Engineering	0	0	0	0	1	1	0	1	1
8	Bio Medical Engg	0	0	0	0	1	1	0	0	0
9	Agriculture Engg	0	0	0	0	0	0	0	0	0
<b>TOTAL</b>		<b>77</b>	<b>98</b>	<b>175</b>	<b>64</b>	<b>71</b>	<b>135</b>	<b>57</b>	<b>64</b>	<b>121</b>

**M.E DEGREE**

S. No	Dept	2019-20			2018-19			2017-18		
		GQ	MQ	Total	GQ	MQ	Total	GQ	MQ	Total
1	M.E - Structural Engineering	2	16	18	NA	16	16	2	10	12
2	M.E - CAD / CAM	0	8	8	NA	9	9	0	4	4
3	M.E - Communication Systems	0	6	6	NA	18	18	0	4	4
4	M.E - Computer Science & Engineering	0	7	7	NA	9	9	0	6	6
5	M.E - Power Electronics & Drives	0	7	7	NA	6	6	0	2	2
<b>TOTAL</b>		<b>2</b>	<b>44</b>	<b>46</b>	<b>0</b>	<b>58</b>	<b>58</b>	<b>2</b>	<b>26</b>	<b>0</b>

## 17. List of Research Projects/ Consultancy Works

Number of Projects carried out, funding agency, Grant received

Dr.A.Srinivasan, Principal Investigator and Mr.B.Meenakshisundaram, Co-Principal Investigator, Department of Electrical and Electronics Engineering has obtained a grant of Rs.40.29 lakhs, from the Department of Science and Technology for the project titled "Recognition and Characterization of Solar cell defects using combined Thermal Image camera and Reconfiguration scheme.

Dr.S.Karthick Kumar, Department of Physics has obtained a grant of Rs.27.34 lakhs from the Department of Science and Technology, New Delhi for the Project titled "Investigation of Graphene modified Metal Oxide thin films for Solar Selective Absorbers".

Our College has obtained a grant of Rs.60 lakhs from the DST-FIST, New Delhi for the Project titled "Funds to Improvement of Science & Technology Infrastructure".

On Going Research Projects:

Sl. No.	Name of faculty	Title of the Project	Fund Details	
1	Dr.A.Srinivasan Dr.B.Meenakshi Sundaram	Recognition and Characterization of Solar cell Defects using Thermography Imaging Techniques	Amount Sanctioned	Rs.40.29 lakhs
			Sponsored by	DST-SERI
			Duration	3 Years
2	Dr.S.Karthick Kumar	Investigation of Graphene modified Metal Oxide thin films for Solar Selective Absorbers	Amount Sanctioned	Rs. 27.34 lakhs
			Sponsored by	DST-SERB
			Duration	3 years
3	Dr. A. Senthil Kumar Dr. K. Sakthipandi Dr. G.D. Sivakumar Dr. A. Merline	Fund for Improvement of S&T Infrastructure	Amount Sanctioned	60.00 Lakhs
			Sponsored By	DST - FIST
			Duration	5 years
4	Ms.S.M.Nazia Fathima Dr.R.Tamilselvi Dr.M.Parisa Beham	OsteoCheX-A handheld device to measure bone density from X-ray images	Amount Sanctioned	11 Lakhs
			Sponsored By	DST-Lockheed
			Duration	2 Years
5	Dr.R.Tamilselvi Dr.M.Parisa Beham Mrs.T.Ruba	Accurate Classification and Detection of Brain Cancer Cells in MRI And CT Images Using Nanocontrast Agents	Amount Sanctioned	0.40 Lakhs
			Sponsored By	Institution of Engineers (India)
			Duration	2 Years
6	Dr. R. Tamilselvi Dr. M. Parisa Beham Dr. A. Merline	Non Invasive Fetal Stress Monitoring Device	Amount Sanctioned	21.47 Lakhs
			Sponsored By	DST - SEED
			Duration	3 Years

7	Dr.T.Venish Kumar	Remote Sensing of Farms Using Agricultural IoT Devices	Amount Sanctioned	0.426 Lakhs
			Sponsored By	Institution of Engineers (India)
			Duration	1 Year

Publications (if any) out of research in last three years out of masters projects

Industry Linkage

MoUs with Industries (minimum 3)

- ❖ M/s TVS Infotech
- ❖ M/s Sun Pressing Pvt Ltd.
- ❖ M/s Suresoft Pvt Ltd.
- ❖ M/s Hi-Tech Arai Pvt Ltd.
- ❖ M/s Infosys Technologies LTD.
- ❖ M/s IBM India Pvt Ltd.
- ❖ M/s Aruna Alloy Steels Pvt Ltd..
- ❖ M/s FLSMIDTH Pvt Ltd.
- ❖ M/s Tata Consultancy Services
- ❖ M/s IMAQ Technologies
- ❖ M/s Strategic Engineering Pvt Ltd.

**18. LoA and subsequent EoA till the current Academic Year**

**Annexure - VIII**

**19. Accounted audited statement for the last three years**

<https://sethu.ac.in/finance-3/>